



TOM MOWBRAY

JK3 Yacht Sales

1070 Marina Village Parkway Suite 109

Alameda, CA, US

Office: 510.227.2100

Mobile: 415.497.3366

tmowbray@jk3yachts.com



1986 Baltic 48 DP

Boat Type: Cruiser

Address: Sausalito, CA, US

Price: \$219,000



OVERVIEW

If you are looking for a pristine example of these incredibly solidly built, fast and beautifully designed and appointed Baltic 48's look no further - This is your boat!

Ellie Mae has been maintained regardless of cost. With brand-new teak decks and AwlGrip surfaces honed to a brilliant shine, she is in excellent condition and a joy to behold. The rigging systems and deck hardware layout have been modernized, she has electric primary winches and many replaced components that make her easier to sail light-handed. Step down below and the magnificence of the rich teak and Scandinavian design is outstanding.

SPECIFICATIONS

Basic Information

Manufacturer:	Baltic	Vessel Name:	Ellie Mae
Model:	48 DP	Boat Type:	Cruiser
Year:	1986	Hull Material:	Fiberglass
Category:	Sail	Hull Type:	
Condition:	Used	Hull Color:	
Location:	Sausalito, CA, US	Designer:	
Available for sale in U.S. waters:	Yes	Flag of Registry:	

Dimensions & Weight

Length:	48 ft - 14.63 meter	Draft - max:	8 ft 8 in - 2.64 meter
LOA:	48 ft 1 in - 14.65 meter	Bridge Clearance:	-
Beam:	14 ft 4 in - 4.37 meter	Dry Weight:	-

Engine

Make:	Volvo	Engine Type:	Inboard
Model:	MD30A	Drive Type:	
Engine(s):	1	Fuel Type:	Diesel
Hours:	-	Horsepower:	62 (Individual), 62 (combined)
Cruise Speed:	-	Max Speed:	-
Range:	-	Joystick Control:	No

Tank Capacities

Fuel Tank:	45 gallons - 1 tank(s)	Holding Tank:	25 gallons - 1 tank(s)
Fresh Water Tank:	-		

Accommodations

Total Cabins:	4	Crew Cabins:	1
Total Berths:	4	Crew Berths:	1
Total Sleeps:	-	Crew Sleeps:	1
Total Heads:	2	Crew Heads:	1
Captains Cabin:	-		

DESCRIPTIONS

Accommodations

Upon first entering the accommodations, the superb quality of the materials, fit and finish of the teak joinery make an immediate impact, while the striking elegance and logic of the high-end scandinavian interior design and layout as described below make a lasting and very favorable impression.

Main Salon

To port as you descend into the Main Salon is a large, slightly raised C shaped settee with adjustable hi/lo table, perfect for dining or casual seating. This area can also be converted into a large Queen berth if desired. Outboard of the settee along the hull side are storage lockers and book shelving. Across to starboard is the Nav Station with a forward-facing chart table. The forward bulkhead of the Nav Station has a locker and electronics mounted and the electrical panel is outboard along the hull side. The main salon furniture and finish is hand-crafted teak with a teak and holly sole.

Galley

To Starboard of the companionway and aft of the main saloon, and incorporating the walk through to the aft cabin is a very well thought-out and functional galley. Outboard along the hull side are lockers, drawers, expansive countertops, propane stove/oven, and two top loading/side loading refrigeration/freezer compartments. Across to port along the hull centerline are two stainless steel sinks set in a stainless steel countertop. Outboard of the sinks is a special racked dish locker that utilizes engine heat. Below the sinks is an access to the engine room located under the cockpit. The galley is finished in hand-crafted teak with a teak and holly sole.

Master Stateroom

Located aft of the galley and occupying the entire aft section of the boat is the Owner's suite with an aft cabin and private head. Slightly raised and on centerline is a partial walk-around Queen size double berth, with curved couches to port and to starboard. Outboard of the settees along the hull sides on both the port and starboard sides are hanging lockers and storage lockers. Ventilation is provided by 4 operable portholes. The furniture and finish is hand crafted teak with a teak and holly sole.

Master stateroom head

On the port side, slightly forward of the Master Stateroom is a WC, vanity, and shower, with storage lockers outboard and below the vanity. The compartment is finished in molded fiberglass, teak trim and a teak shower grate.

Guest Stateroom

Located midships and forward of the main salon is a generous Guest Stateroom berths for up to three in a double pullman berth located below a single upper pullman berth. The furniture and finish is hand crafted teak with a teak and holly sole. To port in the guest stateroom there is a WC, vanity, shower, with locker storage below the vanity and outboard of the WC along the hull side. The finish is molded fiberglass and teak with a teak shower grate.

Forward Cabin

The forward stateroom is an elegantly appointed guest stateroom located immediately aft of the chain locker. There is a pullman style double berth along the starboard side of the hull. To port is a settee with a bin locker behind it. There are hanging lockers to both port and starboard. On the hull side above the berth and settee is shelving. The stateroom furniture and finish is handcrafted teak with a teak and holly cabin sole.

Galley

3 burner Alapse propane stove with oven

24V extractor fan over stove

Dual galley propane shutoffs (1 manual, 1 electric)

Beverage Carafe bulkhead mounted

Beverage Service & Ice Bucket

1 top loading and side loading freezer with 110V/engine driven holding plate

1 top loading and side loading refrigerator with 110v/engine driven holding plate.

1 manual galley freshwater pump

1 manual galley saltwater pump

Engine and Propulsion

Make: Volvo-Penta

Model: MD30A Inline four cylinder naturally aspirated diesel

HP: 62 @ 3800 RPM

Year Installed: Original equipment

Cooling: Freshwater heat exchanger

Exhaust System: Horizontal wet, through rubber marine exhaust hose & stainless steel water-lock, exits transom

Engine Controls: Morse single lever

Gauges/Alarms: Volvo-Penta factory panel, with tachometer, oil pressure, water

Volvo Penta M5 Transmission

Volvo Penta Dripless Seal

Three-bladed feathering prop

Electronics

1 Garmin GPS 3205 Map

1 Garmin GPS 3210 plotter/radar multifunction display

1 Garmin 4 KW radar scanner

1 Garmin GPS72H handheld GPS

1 Standard Horizon GX2200 AIS VHF radio

1 ICOM IC 86 VHF radio

1 Raymarine ST70 digital depth sounder/knotmeter

1 Raymarine ST70 Multi wind speed/depth sounder/knotmeter

2 Raymarine ST60 analog wind point/digital wind speed

1 Raymarine ST60 digital depth sounder

1 Raymarine ST60 digital knotmeter

1 Simrad AP28 autopilot controller with remote

1 Simrad autopilot processor

1 Sunnto binnacle compass

Electrical

Anchor Windlass:

Bow Thruster:

Batteries: Two 6-volt AGM Lifeline (12V house bank)

Four 6-volt AGM (24V house battery System)

One 12-volt Lifeline engine starting battery

One 12-volt 8A4D bow thruster battery

Battery Chargers:

Victron Energy Centaur 24-volt, 60-amp,
Newmar 32-12-60 for engine start battery,
Powermania Turbo 108 thruster battery charger

Rigging

Mast & Boom: Keel stepped triple spreader aluminum mast, painted black matching boom with end-boom sheeting

Standing Rigging: Nitronic solid rod discontinuous, with Navtec 500 Series toggled turnbuckles

Winches:

- 4 Barient 28+ two-speed self-tailing halyard winches,
- 2 Barient 28+ twospeed self-tailing mainsheet winches
- 2 Barient #36 three-speed self-tailing aft cockpit primary powered winches
- 2 Barient #737 three-speed self-tailing forward cockpit primary

Deck Hardware

- 1 Harken adjustable mainsheet traveler
- 2 Harken jib lead tracks, with fixed pin cars
- 1 Reckman roller furler with stainless steel drum
- 1 Custom stainless steel spinnaker sprit
- 1 Stainless steel integral anchor roller with stem fitting
- 1 Stainless steel reboarding ladder
- 2 Stainless steel companionway rails
- 1 Stainless steel bridge deck rail
- 4 Stainless steel Wichard articulating pad-eyes
- 1 Stainless steel 72" destroyer steering wheel
- 1 Stainless steel binnacle guard
- 1 Solmar/Baltic custom aluminum steering pedestal with wheel lock
- 1 Horizontal capstan anchor windlass
- 7 Spinlock XX0812 halyard clutches
- 1 Navtec hydraulic boom vang cylinder
- 1 Navtec hydraulic backstay cylinder
- 1 Navtec hydraulic control panel
- 6 Seasmart aluminum recessed mooring cleats

Pumps

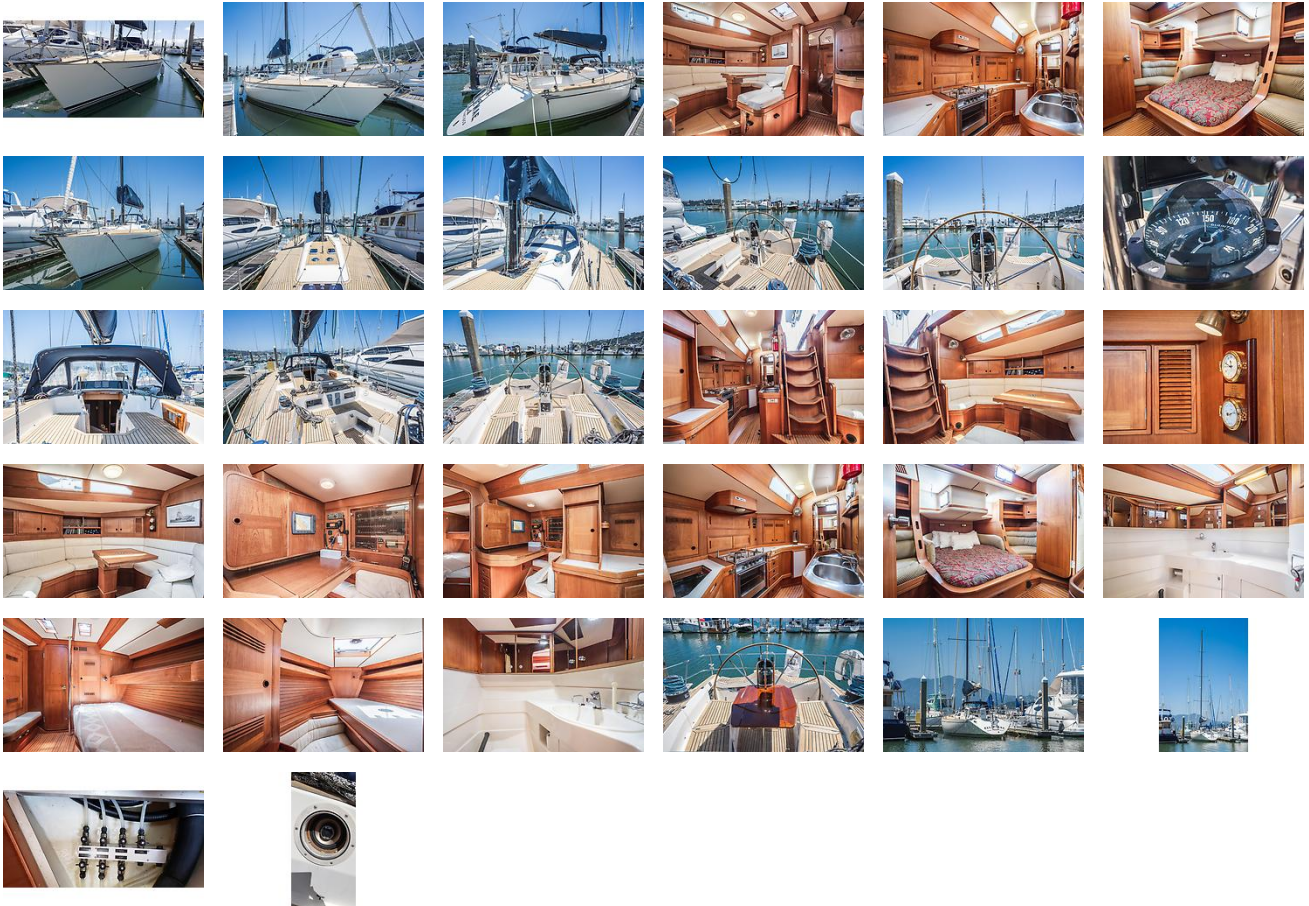
- 2 Whale Gusher 10 manual bilge pumps
- 4 Whale Gusher 3 head & galley foot pumps
- 1 Henderson MKV manual forward holding tank discharge pump
- 2 Par Jabsco diaphragm belt driven sump pumps

- 1 Fasco diaphragm belt driven remote bilge pump with float switch
- 1 Flojet house water pressure pump
- 1 Flojet deck wash down pump
- 1 Flojet refrigeration circulation pump

Disclaimer

The Company offers the details of this vessel in good faith but cannot guarantee or warrant the accuracy of this information nor warrant the condition of the vessel. A buyer should instruct his agents, or his surveyors, to investigate such details as the buyer desires validated. This vessel is offered subject to prior sale, price change, or withdrawal without notice.

GALLERY



LOCATION MAP



TOM MOWBRAY

JK3 Yacht Sales

1070 Marina Village Parkway Suite 109

Alameda, CA, US

Office: 510.227.2100

Mobile: 415.497.3366

tmowbray@jk3yachts.com

