



KENYON MARTIN

JK3 Yacht Sales

2330 Shelter Island Drive Suite 106

San Diego, CA, US

Office: 619.224.6200

Mobile: 858.775.5937

kenyon@jk3yachts.com



2014 J Boats J/88

Boat Type: Racer

Address: SAN DIEGO, CA, US

Price: \$129,900



OVERVIEW

J88 "Blue Flash" - 1st place overall in 2014 Rum Runner Regatta (Newport Beach to San Diego). Consistent boat speed of 13-16 knots with top speed of 17.6 knots.

Other results:

Chicago Mac Race 1st in Class 8th (redress to 8th overall for rendering assistance to other vessel in race, or would have ended up 4th overall) overall

Newport to Ensenada 1st in Class 4th over all.

This one is loaded and set top for point to point racing - see specs or call for details

MANUFACTURER DISCRIPTION

The NEW J/88, a 29' mid-size family speedster with stability, style and sailing comfort hits the sweet-spot in J Boat's performance sprit range - large enough to provide the creature comforts of a sit-in cockpit, inboard

diesel, overnighting interior and head; and small enough to be single-point lifted, owner trailered and stored.

If sailing is having your cake and eating it too, then the J/88 is like ordering the whole dessert menu. Design highlights include a high-aspect, non-overlapping sail plan (no genoas) with a carbon fiber, double-spreader mast - deck stepped for easy rigging, tuning and keeping the main cabin dry.

Since J/88's successful launch in July 2013, it's clear she hits the "sweet spot" in the 28-32 ft sailing category. J/88 has met with critical acclaim in the boating press, awarded the "Best Boat Under 30 Ft" in the 2014 SAILING WORLD Boat of the Year competition as well as receiving high marks from the SAIL Magazine Review team. With 75+ boats ordered to date, J/88 is well on its way to making its mark in both offshore racing as well as local one-design racing fleets.

SPECIFICATIONS

Basic Information

Manufacturer:	J Boats	Vessel Name:	BLUE FLASH
Model:	J/88	Boat Type:	Racer
Year:	2014	Hull Material:	Fiberglass
Category:	Sail	Hull Type:	
Condition:	Used	Hull Color:	
Location:	SAN DIEGO, CA, US	Designer:	
Available for sale in U.S. waters:	Yes	Flag of Registry:	

Dimensions & Weight

Length:	29 ft - 8.84 meter	Draft - max:	6 ft 6 in - 1.98 meter
LOA:	29 ft - 8.84 meter	Bridge Clearance:	-
Beam:	9 ft 6 in - 2.9 meter	Dry Weight:	-

Engine

Make:	Yanmar	Engine Type:	Inboard
Model:	2YM15	Drive Type:	
Engine(s):	1	Fuel Type:	Diesel
Hours:	-	Horsepower:	14 (Individual), 14 (combined)
Cruise Speed:	-	Max Speed:	-
Range:	-	Joystick Control:	No

Tank Capacities

Fuel Tank:	-	Holding Tank:	-
Fresh Water Tank:	-		

Accommodations

Total Cabins:	-	Crew Cabins:	1
Total Berths:	-	Crew Berths:	1
Total Sleeps:	1	Crew Sleeps:	1
Total Heads:	1	Crew Heads:	1
Captains Cabin:	-		

DESCRIPTIONS

ADDED OPTIONS

HULL: Custom LP Paint Job, including prime, fairing, & boot stripe FLAG BLUE with WHITE STRIPES

Two-Toned Deck

Opening Ports on Aft Face of Cabin Top

BOTTOM:

White Bottom "VIVID WHITE" Anti fouling paint on hull, "BLACK WIDOW" Antifouling paint on rudder

Custom Designed Kelp Cutter on Keel

Kelp Stick for Rudder and Sail Drive

CANVAS:

Boom Cover with J/88 Logo - Navy Blue

Jib Furling Sock - Navy Blue

Lifeline pads- Navy Blue Covers

ELECTRONICS:

B&G Zeus Touch 2 9" GPS

B&G Triton HV H5000 20/20s on Mast Bracket (3)

Mast Bracket For 3 Displays

B&G Triton T-41 Display

B&G RC42N Rate Compass

B&G Wind Depth Speed Package

B&G VHF Mounted at NAV

Light on Windex

Tiller Autpilot

110V Shorepower System

Two Batteries - ADDED 2018

Balmar High Output Alternator

INTERIOR

V-Berth Package with cushions

Custom mesh zippered enclosures for all compartment below - see pictures

SAIL INVENTORY

NORTH SAILS INVENTORY:

MAINSAIL

Class Mainsail CSD MNi -1 760iM 12600 Dpi - New 3/1/14

JIBS

Class AP Jib CSD APi-1 760i M 12600 Dpi - New 3/1/14

J1 Light PHRF Jib #Di 780M 8,820 Dpi NON FURLING, DEEP MORE ROACH - New 4/10/14

J2 - CLASS Roller furling Jib, Vertical battens **LIKE NEW**

J3 Heavy PHRF Jib 3Di 780M 14,700 Dpi NON FURLING, FLAT EXCELLANT CONDITION - New 4/10/14

J4 3DI RAW NORTH, Horizontal battens NEW AS OF 2016

SPINNAKERS

Class CSD A2-1 AirX 650 w/graphic - New 3/1/14

A1 PHRF Asymmetric SuperLite/Kote SL 50 - New 4/10/14

A2 PHRF Asymmetric SuperKote SK 60 w/graphic - New Condition 4/10/14

A4 Class Heavy Air Asymmetric Airz 700 - New 4/10/14

A2 3DI North NEW AS OF 2016

OTHER

A0 PHRF Asymmetric Aramid Laminate CZ 15 - New 4/1/14

Smaller Blade Code 0 with Furler NEW AS OF 2016

Storm Jib NEW AS OF 2016

Trysail NEW AS OF 2016

ALL SAILS IN VERY USABLE CONDITION - MAINSAIL WOULD BE CONSIDERED NEXT SAIL TO REPLACE.

RIG

Hall Spars carbon fiber deck step mast w double swept back spreaders

Aluminum Boom

Carbon retractable bow sprit

Adjustable backstay

Custom upgrades to Rig/Deck Gear

OFFSHORE setup to enable peel from working kite to new kite

2nd Spinnaker Halyard Sheave with Exit and 2nd Halyard

Custom Bow Sprit end fitting to Accommodate 2 tack lines

2nd Tack line with T5 Talaska

2nd Jib Halyard Sheave with Exit and 2nd Halyard

4 Additional Jammer on Cabin Side and Cabin Top for added Halyards and Tack Line

Bobstay on bow sprit

SAFETY GEAR

Throwable
Bilge Pump Manual
Bucket
Flares
First Aid Kit
Air Horn
Dock Lines (4)
Flat Fenders (2)
Anchor and Rode

ENGINE

Yanmar 2 cylinder 14 hp 2YM15 Diesel engine w 80 amp alternator
Saildrive SD-20 with Flexifold 2 Bladed Prop
15gal Fuel Tank
Keyless start stop engine panel with Tach, Fuel Gauge, Alarms, Engine Hour Counter
Extra Sound insulation added to engine compartment

TRAILER

Blue Flash has a Custom Trailer with Hull Formed Cradles

1 small storage box on front of trailer

2 long storage boxes on either side under boat

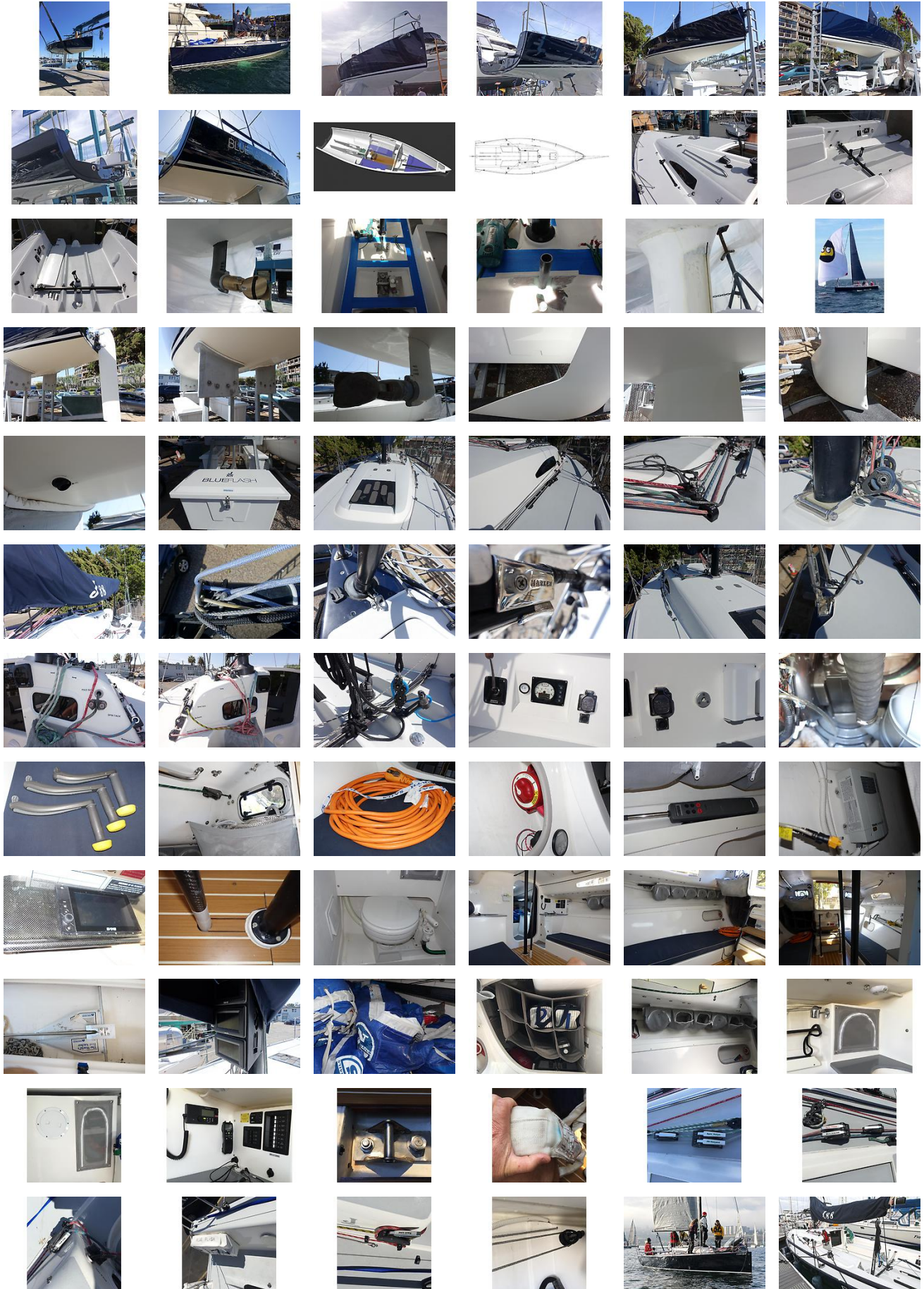
Disclaimer

JK3 Yachts offers the details of this vessel in good faith but cannot guarantee or warrant the accuracy of this information nor warrant the condition of the vessel. A buyer should instruct his agents, or his surveyors, to investigate such details as the buyer desires validated. This vessel is offered subject to prior sale, price change, or withdrawal without notice.

External Links

- [Manufacturer Website](#)Manufacturer Website
- [J/88 Features](#)Additional Media

GALLERY





LOCATION MAP



KENYON MARTIN

JK3 Yacht Sales

2330 Shelter Island Drive Suite 106
San Diego, CA, US
Office: 619.224.6200
Mobile: 858.775.5937
kenyon@jk3yachts.com

