



**KENYON MARTIN**

**JK3 Yacht Sales**

2330 Shelter Island Drive Suite 106

San Diego, CA, US

Office: 619.224.6200

Mobile: 858.775.5937

kenyon@jk3yachts.com



# 2000 J Boats J/105

Boat Type: Racer and Cruiser

Address: San Diego, CA, US

Price: \$71,900



## OVERVIEW

New to the market and lightly race - one of the nicest well cared for 105s available here is your chance to acquire a great one design class racer that is in exceptional condition.

All cabin top hardware removed holes filled with epoxied, redrilled and all hardware reinstalled = **no leaking at fasteners** - head liner was removed and new headliner made out of thin ply cover with a layer of lightweight glass to seal wood - wrapped in factory look white vinyl. all interior teak sanded and finished in high gloss - looks like new ! Chainplates removed cleaned up and rebedded.

Engine completely serviced - new injectors, lifters, water pump, exhaust elbow, engine mounts new prop shaft, cutlass bearing, dripless seal.

## SPECIFICATIONS

### Basic Information

Manufacturer:	J Boats	Vessel Name:	KESTREL
Model:	J/105	Boat Type:	Racer and Cruiser
Year:	2000	Hull Material:	Fiberglass
Category:	Sail	Hull Type:	
Condition:	Used	Hull Color:	
Location:	San Diego, CA, US	Designer:	
Available for sale in U.S. waters:	Yes	Flag of Registry:	

### Dimensions & Weight

Length:	35 ft - 10.67 meter	Draft - max:	-
LOA:	34 ft 5 in - 10.49 meter	Bridge Clearance:	-
Beam:	11 ft - 3.35 meter	Dry Weight:	-

### Engine

Make:		Engine Type:	
Model:		Drive Type:	
Engine(s):	1	Fuel Type:	
Hours:	-	Horsepower:	-
Cruise Speed:	-	Max Speed:	-
Range:	-	Joystick Control:	No

### Tank Capacities

Fuel Tank:	-	Holding Tank:	-
Fresh Water Tank:	-		

### Accommodations

Total Cabins:	-	Crew Cabins:	1
Total Berths:	-	Crew Berths:	1
Total Sleeps:	1	Crew Sleeps:	1
Total Heads:	1	Crew Heads:	1
Captains Cabin:	-		

## DESCRIPTIONS

### DIMS

LOA: 34' 50"  
LWL: 39' 50"  
BEAM: 11' 39";

DRAFT: 6'39"; 50"  
DISP: 7,750 lbs  
BALLAST: 3,400 lbs.

## CONSTRUCTION

TPI-Scrimp Construction (patented infusion process) with Fiberglass and polyester resins

White Gelcoat outer surface, non skid on decks.

## FACTORY\_OPTIONS

Custom Wheel Package:

- Edson Diamond Series 48"; White Aluminum Wheel with Leather Grip
- Ritchie Binnacle Compass with Light
- Custom GRP Molded Pedestal with SS Guard
- Aluminum Emergency Tiller
- White Vinyl Afterdeck & Side Deck Cushions at Wheel.

Comfort Group Package

- Bomar Bronze Tinted Main Cabin Opening Ports
- Dual Purpose Sunbrella 3"; Acrylic Cockpit/Settee-Backrest Cushions
- (6) Custom Acrylic covered Lifeline Covers dark blue
- Mainsail cover dark blue
- Dodger White

Systems Group Package

- Automatic Electric Bilge with check valve and Panel Switch for Manual Operation
- Sink in Vanity counter of Forward Head with Foot Pump and drain into Head Bowl
- 20 Ga. Fresh Water Tank Under Starboard Berth with Deck Fill
- Origo 2000CB 1-Burner Alcohol Stove with Cutting Board
- Utensil Drawer in Galley
- Utility Drawer under Nav Table
- Storage under Nav Table to hold Charts and Misc

- 2 Aft-Facing Ports
- SS Grab Rails in Main Cabin
- 110v Shore Power and cord with Battery Charger
- Dodger and frame
- Dual Purpose Main Cabin / Cockpit Table (see pictures)

## PROPULSION

- Yanmar 20 HP Diesel
- Standard steel fuel tank - replaced 2011
- Folding 2 blade prop - standard Martec in box and GORI 2 blade folding currently installed
- 2 Optima Blue Batteries
- Racor fuel filter and sea strainer

**Motor recently completely serviced**

- Rebuilt injector,
- Cooling system / Heat Exchanger Flushed

- New water pump
- New motor mounts
- New exhaust elbow
- High Pressure pump rebuilt
- New Racor fuel filter with electric boost pump added to prime system
- New filter housing
- New fuel hoses
- Fuel tank cleaned
  
- New stainless steel prop shaft
- New Cutlass Bearing
- New packing gland
- New coupler to transmission

## **E L E C T R O N I C S**

- B & G Network Pilot Pack on Seahood wind / depth / speed 3 total
- B & G ACP controller
- B & G Autopilot
- GARMIN GPS on swivel bracket not mounted
- VHF RADIO Standard Horizon
- 10' Ram Mic Extension
  
- Stereo with CD Player
- Speakers in main salon
- Removable speakers for cockpit
- NEW Amplifier
  
- Battery charger
- Battery selector switch
- 120v Shore Power and Cable 30 Amp
- Volt meter at NAV Station
- AC Panel • DC Panel
- 12v Plug / 120 outlet
  
- MANUAL / AUTO Bilge Pump switch

## **S A I L S**

### **MAINS: 4 total**

- 1. Quantum Class Main 0304233Q in excellent condition with little use.**
- 2. Ullman Class Main 1109292U in good/excellent condition**
- 3. West Wind Sails Class Main 0312693W in excellent condition with little use**
- 4. Additional Main**

### **JIBS: 5 total**

- 1. Ullman Class Jib 0709335U black Technora in good condition**
- 2. Ullman Class Jib 1109294U kevlar in fair/good condition**

**3. Ullman Class Jib 1209219U in black Technora in excellent condition**

**4. West Wind Sails Class Jib 0312689W black Technora in excellent condition**

**5. Ullman Class Jib 1109293U black Technora in fair/good condition**

**GENOA: 1 total**

**1. UK PHRF genoa. Tape Drive in Excellent condition.**

**2. PHRF Genoa Good to Excellent condition.**

**SPINNAKERS: 8 total**

**3- class spinnakers; 2 in good condition, 1 crispy - great condition**

**1- PHRF Spinnaker UK brand - Crispy great condition**

**4 - North Sails Class spinnakers with various logos on sails, used for Lipton Cup and Masters Regattas**

## **S A E F T Y - G E A R**

8 Type II Orange Life Jackets

Air Horn

First Aid Kit

Radar Reflector

Flare Kit

Aluminum Emergency Tiller

SS Stern Boarding Ladder

Discharge Plaques

USCG Documented Vessel Plaque

Running Lights - port / starboard / stern / steaming on mast

## **A D D I T I O N A L**

4- Fenders

Dock Lines

Anchor and Rode

Interior Cushions:

- Dark blue with red contrast, can be used on cockpit forward seating

- V Berth cushions

CANVAS: All Dark Blue

- Wheel & Pedestal Cover

- Main Sheet Cover

- Main Sail Cover

- Fwd Hatch Cover

- Deck Over Boom Cover, (covers from transom to forward of mast)

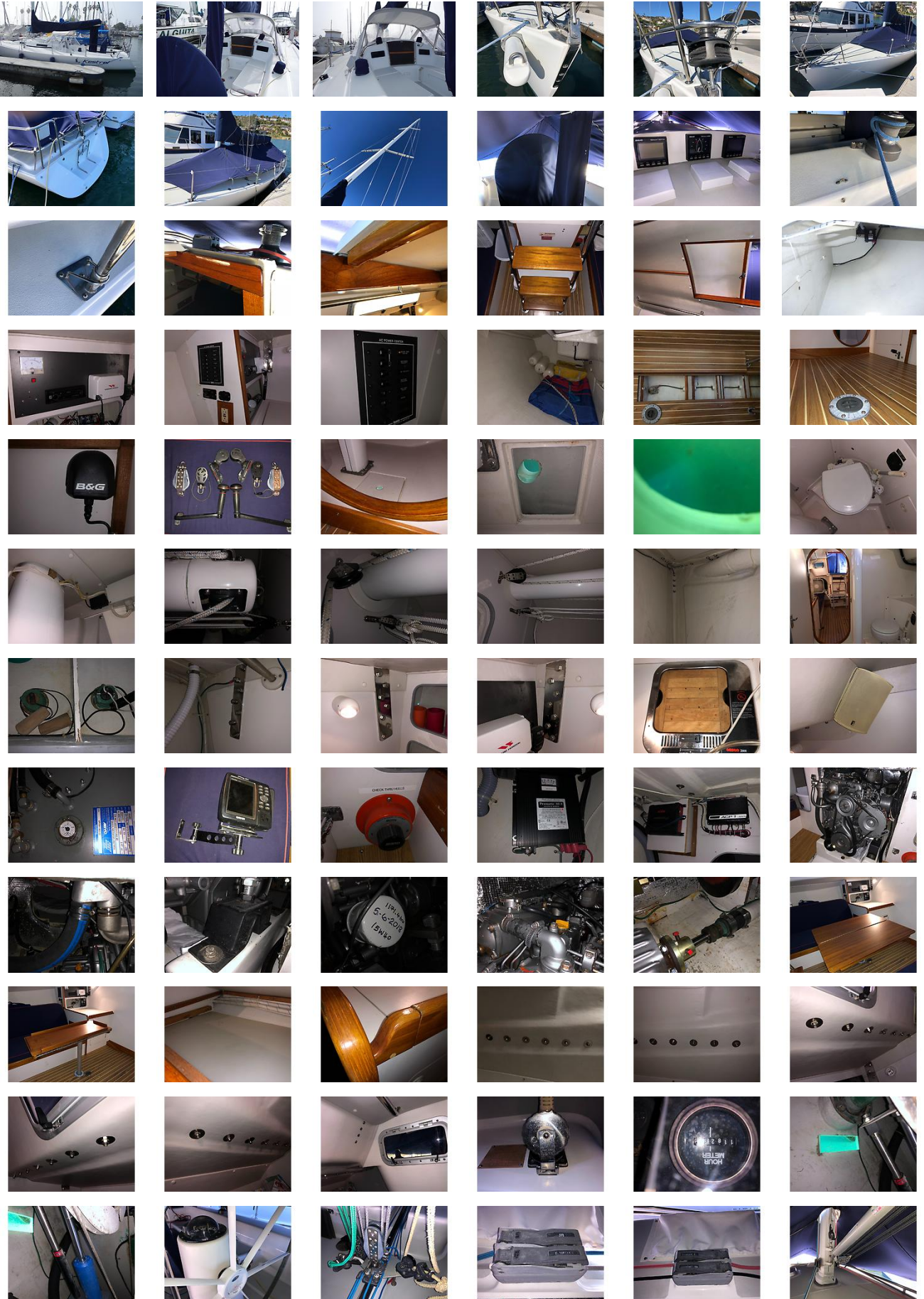
Windows at Rudder and Keel (kelp windows) Pictured

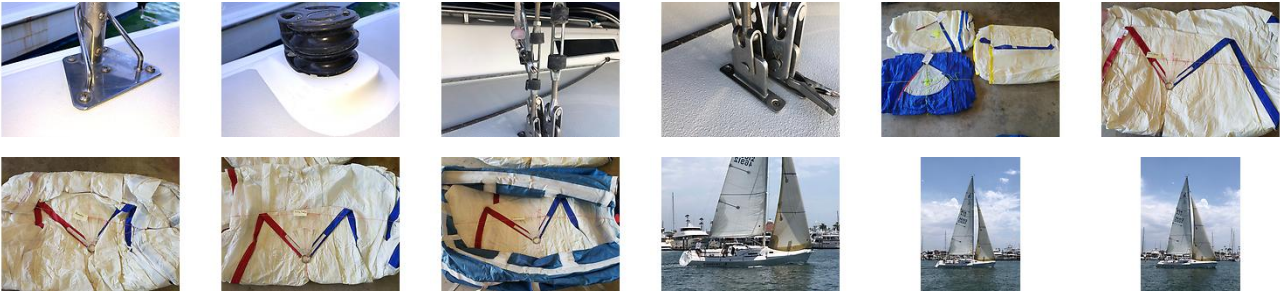
**Disclaimer**

JK3 offers the details of this vessel in good faith but cannot guarantee or warrant the accuracy of this information nor warrant the condition of the vessel. A buyer should instruct his agents, or his surveyors, to investigate such details as the buyer desires validated. This vessel is offered subject to prior sale, price change, or withdrawal without notice.



# GALLERY





LOCATION MAP



**KENYON MARTIN**

**JK3 Yacht Sales**  
 2330 Shelter Island Drive Suite 106  
 San Diego, CA, US  
 Office: 619.224.6200  
 Mobile: 858.775.5937  
[kenyon@jk3yachts.com](mailto:kenyon@jk3yachts.com)

