



DIEGO GOMEZ
JK3 Yacht Sales
1070 Marina Village Parkway Suite 109
Alameda, CA, US
Office: 510.227.2100
Mobile: 619-519-3093
diego@jk3yachts.com



2014 Hanse 505

Boat Type: Cruiser

Address: Alameda, CA, US

Price: \$419,000



OVERVIEW

You are looking for a modern performance cruising boat that has been upgraded in all the important areas to ensure safe passage-making offshore. You are looking for a good value, on a nearly new boat, that won't have issues at survey, or need money spent right away on deferred maintenance.

Festina Lente is just that. Her owner purchased her new, taking delivery in September 2014, with two intentions:

1. To enjoy sailing on San Francisco Bay with family, and a short cruise to Southern California.
2. To spend time training with crew, closer to home, in advance of a bucket list trip bringing their other sailboat from Europe, across the Atlantic, through the Canal, and up the west coast.

This Hanse 505 has been taken from an excellent sailing, performance cruiser, to now being equipped with more robust hardware, rigging, and sails to take on true blue-water sailing.

With two Hanse 505s having just placed 1st and 2nd in their class on the 2018 Pacific Cup Race from San Francisco to Hawaii, there's no doubt they are great performers in the ocean.

The interior accommodation is fantastic, and very comfortable underway or at the dock. All systems are in good working order, and you will appreciate the care, maintenance, and thought her owner has taken with her.

Key Highlights:

- Heavily upgraded by Easom Rigging for safe offshore cruising
- Custom storm sails and Cruising Gennaker w/ snuffer by Doyle Sails
- Custom engineered removable inner forestay
- Many upgrades to stock parts incl. sail bag, lazy jacks, jib track, pulpit, etc. to make the boat more bulletproof offshore
- Custom freshwater toilet in day head
- Custom pressure accumulator on fresh water system
- Complete B&G Electronics package incl. Radar and AIS
- Retractable 24v bowthruster
- Electric primary winches
- Hydraulic swim platform
- Leather Upholstery
- Comfort mattresses for all berths, custom sheets and mattress protectors for master and 2 guest cabins
- Complete Teak Deck package
- Custom canvas
- Sunbed and cockpit cushions
- Performance cruising FCL Sails
- Serviced and maintained by KKMI Boatyard
- LLC Owned
- Winslow 6-man liferaft in hard case, purchased new, just expired 5/18

All upgrades and enhancements were professionally installed by the premier boatyard and riggers in the San Francisco area.

SPECIFICATIONS

Basic Information

Manufacturer:	Hanse	Vessel Name:	Festina Lente
Model:	505	Boat Type:	Cruiser
Year:	2014	Hull Material:	Fiberglass
Category:	Sail	Hull Type:	
Condition:	Used	Hull Color:	
Location:	Alameda, CA, US	Designer:	judel / vrolijk & co
Available for sale in U.S. waters:	Yes	Flag of Registry:	

Dimensions & Weight

Length:	50 ft - 15.24 meter	Draft - max:	7 ft 10 in - 2.39 meter
LOA:	-	Bridge Clearance:	72 ft 6 in - 22.1 meter
Beam:	15 ft 7 in - 4.75 meter	Dry Weight:	-

Engine

Make:	Volvo	Engine Type:	Inboard
Model:	D2-75	Drive Type:	
Engine(s):	1	Fuel Type:	Diesel
Hours:	499	Horsepower:	72 (Individual), 72 (combined)
Cruise Speed:	-	Max Speed:	-
Range:	-	Joystick Control:	No

Tank Capacities

Fuel Tank:	74 gallons - 1 tank(s)	Holding Tank:	-
Fresh Water Tank:	166 gallons - 2 tank(s)		

Accommodations

Total Cabins:	4	Crew Cabins:	1
Total Berths:	3	Crew Berths:	1
Total Sleeps:	1	Crew Sleeps:	1
Total Heads:	2	Crew Heads:	1
Captains Cabin:	-		

DESCRIPTIONS

Layout

Sail Locker in Bow

- Access watertight hatch to chain locker
- Ladder
- Ample storage for sails, fenders, dinghy, outdoor cushions, etc.

Owner's Cabin (Forward)

- Island; double berth
- 2 large hanging lockers with shelves
- Separate head compartment w/ opening hatch (to port)
- Separate Shower compartment w/ opening hatch (to starboard)
- Small vanity area
- 2 reading lights
- Overhead and indirect lighting in cabin
- 2 shelves along the hull
- 2 hull port lights
- 2 large hatches above berth

Saloon

- L settee on stb side with fixed, folding table and storage in center
- Island; with bench and dedicated space for TV lifter
- 2 reading lights on the fwd bulkhead
- Shelves and lockers along the hull with fiddles,
- 2 hull large port lights

- Fwd looking navigation table on stb. with lockers drawers and shelves
- Galley along the port side hull with drawers and storage space
- Freezer
- 3 burner ENO stove with oven
- 2 x S/S sinks with mixing tab
- Day head to starboard
- 2 hatches
- 4 opening side coachroof portlights
- 2 overhead handrails
- Bottle storage under floorboards

Bunk Room

- 2 bunks with separate seating area and tall hanging locker
- Storage space under lower bunk
- Upper bunk hinges down when not needed
- Excellent for overflow accommodation, captain quarters, storage space, closet space
- Opening hatches
- 2 reading lights

2 aft cabins

- Double berths
- Hanging lockers with shelves
- 2 reading lights each
- Lockers along the hull
- 1 hull portlight each side
- 1 opening overhead portlight in port cabin
- 2 opening overhead portlights in stb cabin
- 1 large opening cockpit portlight each side

Interior Appointments

- Furniture: American Cherry Veneer Satin Finish
- Teak and Holly composite floorboards
- American Cherry wooden door frames
- American Cherry Veneer Wood / Sandwich doors
- Black solid surface galley counter
- Upholstery: Portofino Leather (White)

Rig and Sails

Rig

- Selden anodized aluminum 2 spreader, deck stepped tapered mast
- Boom with 2 single-line reefing lines
- Below deck jib furler
- Main halyard w/ custom double clutch
- Jib halyard customized to fit on fixed point mast tensioner
- Second jib halyard for storm jib
- Mid boom "German Mainsheet" with 2 stand-up blocks, lines led aft to helm
- Jib sheet for self tacking jib led aft to helm
- Rod kicker boom vang
- Backstay adjuster (winch handle controlled)
- Custom removable inner forestay for storm jib
- Custom 2-part running backstays for use with storm jib
- Custom spectra lazy jacks mounted to mast rather than spreader. Can be tucked forward against mast when

sailing

- Deck jacklines and additional padeyes installed

Sails

- Upgraded Elvstrom FCL performance cruising sails (main and jib)
- Custom Doyle Sails Gennaker
- Custom Doyle Sails Storm Trysail (orange) w/ custom dedicated track on mast. Incl sheets
- Custom Doyle Sails Storm Jib (orange) w/ hanks for use w/ removable inner forestay. Incl. sheets, blocks. Halyard runs back to cockpit.

Navigation Electronics

- 2 x NavPods at helm pedestals
- 2 x B&G Zeus Touch 8 GPS Chart Plotter (1 at each helm)
- 2 x B&G Triton MFD (1 each side)
- B&G Wind, Speed, Depth, Temp transducers
- B&G Autopilot w/ control at stbd helm, fluxgate compass
- B&G 4G Radar installed on mast
- B&G AIS Clas B Transponder
- B&G GoFree Wireless Link
- Compass

Electrical

- 12V and 110V/230 V

Batteries

- Main battery switches
- Engine battery: 12V/80Ah AGM
- Service battery bank: 12V/4x160Ah AGM

Battery charger/Shore power

- Charger 12V/50A
- Isolator switch
- 230 V shore supply protected with differential breaker and distribution system

Electric control panel 110V/230V

- Differential breakers
- Control gauges
- Voltmeter

Electric control panel 12V

- Switches for all onboard electrics (upgraded instrument panel)
- Voltmeter and battery control (digital)
- Water / Fuel gauges

12V electric equipment

- Electrical anchor windlass
- Pumps
- Navigation lights
- LED Interior lights
- Refrigeration

Outlets 110V

- at chart table single outlet
- in fwd. cabin one each
- in aft. cabin one each
- in galley twin outlet
- in saloon twin outlet
- in heads one each

Outlets 12V

- at chart table
- at helm station

Interior lighting

- Overhead lighting in cabins, saloon, galley and heads
- Lighting in engine compartment
- Reading lights (white/red) in saloon and cabins
- Night light on companion way

Navigation lights

- Navigation lights LED on pulpit and pushpit
- Steaming light
- Anchor light

Engine

- Volvo D2-75 (72 HP), diesel engine
- Sail drive
- 3 bladed folding propeller
- 2 x fuel tanks, total capacity approx. 74 gallons
- Fuel deck fill
- Fuel filter / Water separator
- Engine room sound insulated and illuminated

Hull

- White-Grey hull
- Dark grey waterline and cove stripes
- Isophthalic gelcoat
- Vinylester for all outer laminates
- Balsa sandwich above waterline
- Polyester inner laminate (orthophthalic or DCPD)
- Main bulkhead laminated to hull and deck
- GRP strongbacks
- Horizontal Hull windows

Deck

- Teak on side decks, coach roof, cockpit and swim platform
- Isophthalic gelcoat
- Vinylester 1st layer
- Bulk laminate polyester (orthophthalic or DCPD)
- Balsa sandwich
- Engine control at helm station stb
- 6 retractable mooring cleats
- Self-draining chain locker with electrical windlass
- Fixed anchor arm with anchor roller and teak foot step with integrated pad eye
- Stainless steel cockpit table in teak with S/S chart plotter bracket

- Foredeck sail storage with ladder and big hatch and watertight access hatch to chain locker
- Hot & cold shower on aft deck
- Self-draining cockpit
- Storage for gas bottle, self draining
- Stainless steel swimming ladder
- Hydraulic hinged swimming platform with integrated helmsman seats
- Self tacking jib track, fully integrated in the foredeck
- Mid boom sheeting with 2 stand- up blocks
- 2 x 5 sheave deck organizers
- 10 deck jammers
- 2 x pad eyes for jib
- 7 Flush hatches
- 4 hatches
- 4 opening side windows on coach roof
- 2 large opening portlights in cockpit
- Stainless steel pushpit with ensign flag socket
- LED navigation light on transom
- Stainless steel split pulpit with LED navigation lights, custom reinforced
- Stainless steel stanchions tapered
- Rail gates on both sides
- 4 winches in cockpit:
- 2 Lewmar 54 Electric Primary Winches
- 2 Lewmar 54 Manual Secondary Winches

Galley

- Solid surface, black quartz with integrated double sink
- 3-burner ENO LPG stove with oven, gimble
- LPG gas system and self draining LPG bottle storage in cockpit
- 2 x large drawer S/S fridge
- 1 x large drawer S/S freezer
- Lockers and drawers
- Waste bin
- Microwave
- Nespresso Coffeemaker

Disclaimer

The Company offers the details of this vessel in good faith but cannot guarantee or warrant the accuracy of this information nor warrant the condition of the vessel. A buyer should instruct his agents, or his surveyors, to investigate such details as the buyer desires validated. This vessel is offered subject to prior sale, price change, or withdrawal without notice.

customContactInformation

At JK3 we are a highly motivated team of sales professionals, and work very hard to market and sell your boat. Please give us a call to discuss our yacht brokerage services.

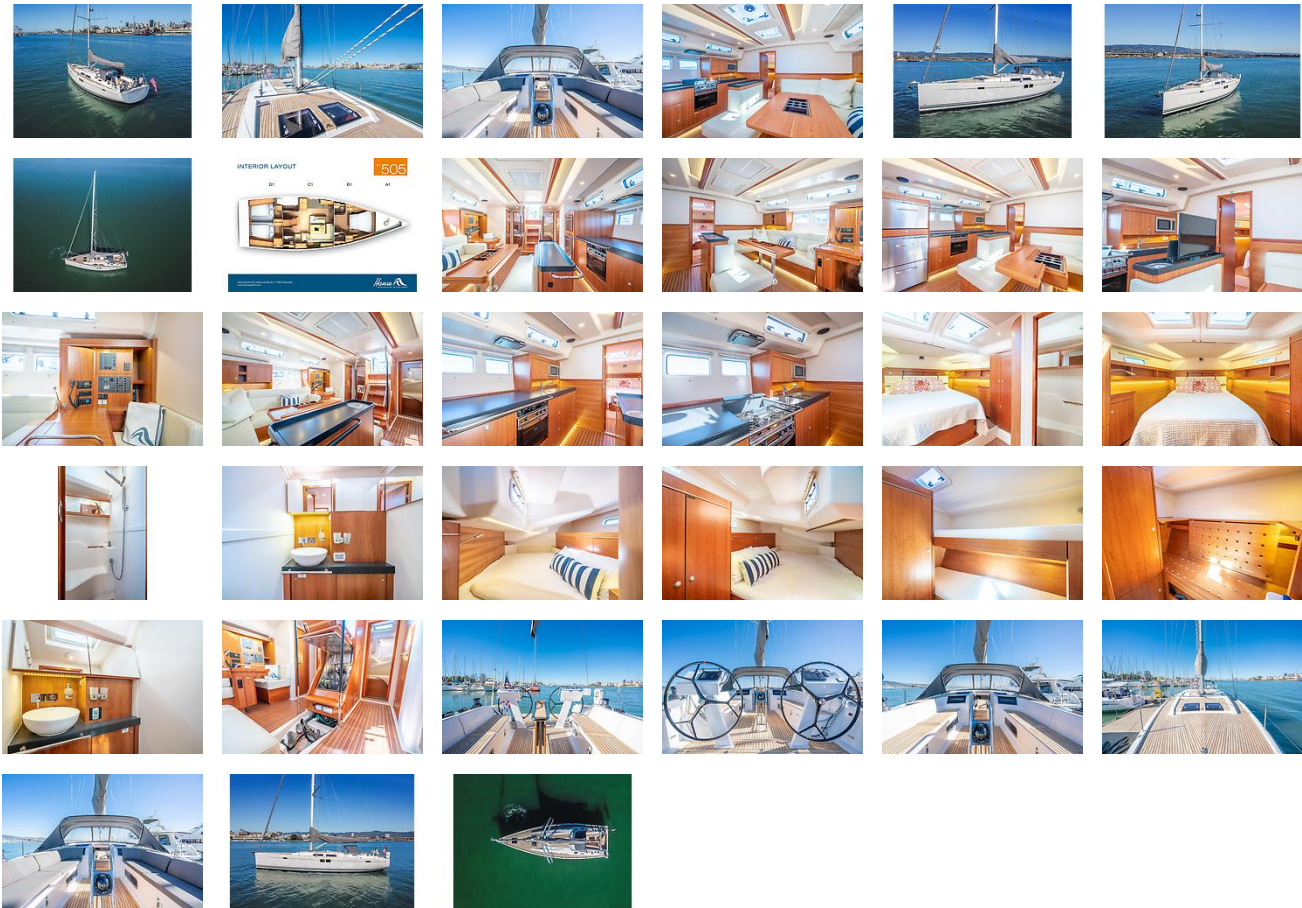
JK3 prides itself on representing quality yacht listings for west coast USA yacht owners. Whether you're on the market for your next yacht or just exploring, give us a call to see how we can help you find what you are looking for. Remember, JK3 offers free buyer's representation - take advantage of our advice and expertise today!

Diego Gomez

Cell: 619-519-3093

diego@jk3yachts.com

GALLERY



LOCATION MAP



DIEGO GOMEZ
JK3 Yacht Sales
 1070 Marina Village Parkway Suite 109
 Alameda, CA, US
 Office: 510.227.2100
 Mobile: 619-519-3093
 diego@jk3yachts.com

