



MASTER ADMIN

JK3 Yacht Sales

2330 Shelter Island Drive Suite 106

San Diego, CA, US

Office: 619.224.6200

Mobile: (619)-431-1194

info@jk3yachts.com

1994 Hunter Passage 42

Boat Type: Cruiser

Address: Alamitos Bay, CA, US

Price: \$111,000



OVERVIEW

This Center Cockpit cruiser was meticulously maintained by the owner with many custom additions you need to see to believe. Customization includes Gen-Set, air conditioning, Fully enclosed Dodger with handholds and covers, Rear outside propane system, new cushions throughout, Sleep number mattresses with bedding, Transom seating area, rear anchor rode, fold down swim steps, and many more too numerous to mention. You need to see this boat in person to comprehend how much work was done to it. New equipment throughout including new compressors on Refer, Freezer, and AC unit, new covers and cushions interior and exterior. The Ipad urn entertainment system will add ambiance to any sail or weekend stay. New mast and standing rigging in 2013. Ready to sail short handed, or fully crewed, with furling jib, in boom furling main, and gennaker in an easy to deploy sock.

SPECIFICATIONS

Basic Information

Manufacturer:	Hunter	Vessel Name:	CTS
Model:	Passage 42	Boat Type:	Cruiser
Year:	1994	Hull Material:	Fiberglass
Category:	Sail	Hull Type:	
Condition:	Used	Hull Color:	
Location:	Alamitos Bay, CA, US	Designer:	Hunter Design Team
Available for sale in U.S. waters:	Yes	Flag of Registry:	

Dimensions & Weight

Length:	42 ft - 12.8 meter	Draft - max:	4 ft 10 in - 1.47 meter
LOA:	-	Bridge Clearance:	-
Beam:	14 ft - 4.27 meter	Dry Weight:	24000 ft - 7315.2 meter

Engine

Make:	Yanmar	Engine Type:	Inboard
Model:	4JH2-TE	Drive Type:	
Engine(s):	1	Fuel Type:	Diesel
Hours:	2719	Horsepower:	62 (Individual), 62 (combined)
Cruise Speed:	-	Max Speed:	-
Range:	-	Joystick Control:	No

Tank Capacities

Fuel Tank:	71 gallons - 1 tank(s)	Holding Tank:	35 gallons - 1 tank(s)
Fresh Water Tank:	80 gallons - 2 tank(s)		

Accommodations

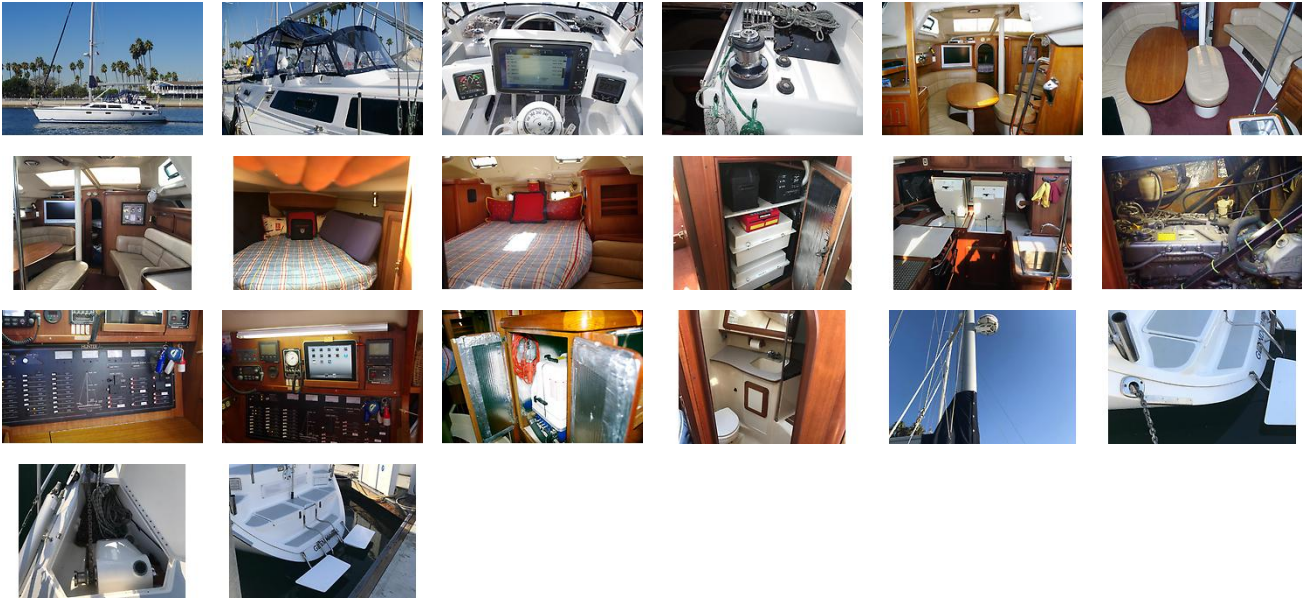
Total Cabins:	2	Crew Cabins:	1
Total Berths:	2	Crew Berths:	1
Total Sleeps:	1	Crew Sleeps:	1
Total Heads:	2	Crew Heads:	1
Captains Cabin:	-		

DESCRIPTIONS

customContactInformation

Contact Jim Murrell at 310-717-0775

GALLERY



LOCATION MAP



MASTER ADMIN

JK3 Yacht Sales

2330 Shelter Island Drive Suite 106

San Diego, CA, US

Office: 619.224.6200

Mobile: (619)-431-1194

info@jk3yachts.com