



## MASTER ADMIN

**JK3 Yacht Sales**

2330 Shelter Island Drive Suite 106

San Diego, CA, US

Office: 619.224.6200

Mobile: (619)-431-1194

info@jk3yachts.com

# 2018 Axopar 37 C

Boat Type: Cruiser

Address: SEATTLE, WA, US

Price: [Upon Request](#)



## OVERVIEW

### IN STOCK AVAILABLE NOW IN SEATTLE, WA

Extend your on water experience with the spacious Axopar 37 Cabin, a fully enclosable cabin with twin large sliding doors and a sliding canvas roof to meet the diverse weathre conditions out at sea, combined with the award winning hulls responsive handling, comfort and safety.

This highly adaptable model has ample space for fishing and other activities on the aft deck and a large sociable sun bed on the fore deck. A convenient cargo hatch on the foredeck enables fast and easy stowage of all your gear straight into the front cabin from the deck. The Axopar 37 Cabin excels with its bright and spacious cabin with seating for up to six people around a large table in the saloon. The cabin/saloon also features a large storage compartment under the sofa.

Whether for island hopping, fishing or just unwinding with friends and family you'll love the Axopar 37 Cabin.

## SPECIFICATIONS

### Basic Information

Manufacturer:	Axopar	Vessel Name:	Axopar 37 C - WETBAR
Model:	37 C	Boat Type:	Cruiser
Year:	2018	Hull Material:	Fiberglass
Category:	Power	Hull Type:	
Condition:	New	Hull Color:	
Location:	SEATTLE, WA, US	Designer:	
Available for sale in U.S. waters:	Yes	Flag of Registry:	

### Dimensions & Weight

Length:	37 ft - 11.28 meter	Draft - max:	2 ft 9 in - 0.84 meter
LOA:	-	Bridge Clearance:	-
Beam:	10 ft 10 in - 3.3 meter	Dry Weight:	9710 ft - 2959.61 meter

### Engine

Make:	Mercury	Engine Type:	Outboard
Model:	Verado Cold Fusion	Drive Type:	
Engine(s):	2	Fuel Type:	Gas/Petrol
Hours:	-	Horsepower:	350 (Individual), 700 (combined)
Cruise Speed:	32 MPH	Max Speed:	58 MPH
Range:	-	Joystick Control:	No

### Tank Capacities

Fuel Tank:	203 gallons - 1 tank(s)	Holding Tank:	-
Fresh Water Tank:	-		

### Accommodations

Total Cabins:	1	Crew Cabins:	1
Total Berths:	1	Crew Berths:	1
Total Sleeps:	1	Crew Sleeps:	1
Total Heads:	1	Crew Heads:	1
Captains Cabin:	-		

## DESCRIPTIONS

### STANDARD EQUIPMENT

**HULL AND DECK:** Hand laminated hull in Vinylester resin for the first coat of the hull in GRP material, Anti-skid finishing on deck and hatches, Spacious anchor box with drainage in bow, Large stowage locker on foredeck, Heavy

duty rub rail in grey, Windscreen and side windows in toughened glass with light green tint, All hardware, pulpit and cockpit handles in hand polished 316 stainless steel, 8 x cleats aft, central and forward, Self-draining deck with large diameter scuppers, Flag pole, Twin large fender storages on aft deck with cooler box function on Port side, Integrated bathing platforms in Esthec Platinum with white caulking and telescopic bathing ladder, Integrated engine bracket for outboard engines.

**LAY-OUT AND SEATING:** Walk-around cabin with open aft deck area and under deck storage, Optional wet bar, Large sliding side doors on both sides of cabin, Manually operated sliding canvas roof with additional harbour cover, L-sofa with fixed table and walnut floor on threshold, Large storage compartment under aft sofa, two front seats with flip-up front/swivel function and armrests, Optional sundeck on fore deck, "Silvertex" Beige or Meteor material on driver/co-pilot seats and aft sofa, Floor carpets in saloon and front cabin.

**FRONT CABIN:** Front cabin with lounge seating, large queen size bed and fixed cupboard, Toilet with electric flush with septic tank 70l and deck/hull outlets, Privacy curtains for toilet compartment, Loading hatch from deck to front cabin, Large roof skylight and front window, Wide port lights with flush hatches.

**HELM CONSOLE:** Integrated iPad slot in dashboard, Soft touch painted dashboard and console panels, Metallic silver painted helm panels, Illuminated push buttons, Leather steering wheel with Axopar logo, 2 x Cup holders, Stainless steel grab rail, 12V Power outlet, Compass, Access hatch to front cabin with sliding door.

**ELECTRICS:** LED roof spotlights in saloon and in front cabin, Main control panel with three battery switches and automatic fuses for direct supply and 12V outlet, Fuse panel with automatic fuses and 12V outlet in front cabin, Light mast with anchor light, Navigation lights, Windscreen wipers with washer, Electric bilge pumps x 2, Signal horn.

**OTHER:** Fixed aluminium fuel tank 730l, Bow thruster preparation in hull, 2 kg Fire extinguisher, Manual bilge pump, air vents in front cabin roof panel.

## OPTIONS ADDED

### PACKAGES

Premium Package, **Silvertex Graphite**

Wet bar package (only w. freshwater or kitchen package)

### EQUIPMENT

Bowthruster Side-Power SE60

Folding anchor windlass in bow + remote control (only with bow thruster)

Electric windlass in stern, Engbo Midi 201 + remote control

Side rails/Targa arch with roof rails

Fishing targa arch (2 extra rod holders)

Waterski pole

Freshwater 100l tank, incl. cabinet w. sink, front cabin

Shower on Aft Deck (only w. freshwater option)

LED courtesy lights, front cabin and main cabin

Refrigerator in main cabin, Dometic CRX CM50

Shore Power 120V with 40Ah charger, US standard

Heater Webasto AT3900 (not available with Airconditioning)

Search light

Wood floor in front cabin

Wood floor in main cabin

Preparation for overseas shipping (including loading and SS Cradle)

US standard fuel system (EPA)

Underwater lights

Electrical roof system Webasto

### HULL COLOR

Grey, RAL 7037

## **ELECTRONICS**

Twin Chartplotter Garmin GPSmap 7410, Flush mount  
Intelliducer™, Depth and Temp, Thru-hull  
Sonar module Garmin GSD™ 25+ GT40-TM, DownVü/SideVü + Traditional  
Radar GMR18 18HD+ redesign  
Communication Garmin VHF300i

## **AUDIO**

Fusion Entertainment system, incl. 4 x speakers  
Control unit for Fusion system, helm  
Audio upgrade2, 1 x subwoofer on aft deck and 5ch amplifier (only w. UpgradeAudio1)

## **ENGINE**

TWIN 350HP MERCURY VERADO OUTBOARDS IN **COLD FUSION WHITE**  
Verado L6 pre-rig, TWIN engines, incl, VesselView 702  
Mercury upgrade package(Activ Trim, Remote Vessel View, TDS)

## **CUSHIONS AND SEAT COLORS**

Sundeck cushions on fore deck, Silvertex Graphite  
Harbor cover for fore deck, Sunbrella Plus Charcoal  
Seats, Silvertex Graphite  
Sun shade w. stainless steel supports for fore deck, for stationary use

## **customContactInformation**

**Contact your local JK3 Yachts office to receive more information on this beautiful yacht:**

### **San Diego (Main) Office:**

INFO@JK3YACHTS.COM

Kenyon Martin Kenyon@jk3yachts.com 858-775-5937

Rick Boyce Rick@jk3yachts.com 858-386-9533

Tiffany Billings Tiffany@jk3yachts.com 858-213-6722

### **Newport Beach Office:**

Aaron Kitakis aaron@jk3yachts.com 949-226-4619

### **Marina Del Rey Office:**

Jim Murrell jim@jk3yachts.com 310-717-0775

### **Alameda Office:**

Diego Gomez Diego@jk3yachts.com 619-519-3093

Alan Weaver Alan@jk3yachts.com 510-928-8900

Tom Mowbray tmowbray@jk3yachts.com 415-497-3366

### **Seattle Office:**

Bob Pistay bob@jk3yachts.com 206-285-6200

Ben Bottoms ben@jk3yachts.com 615-305-8059

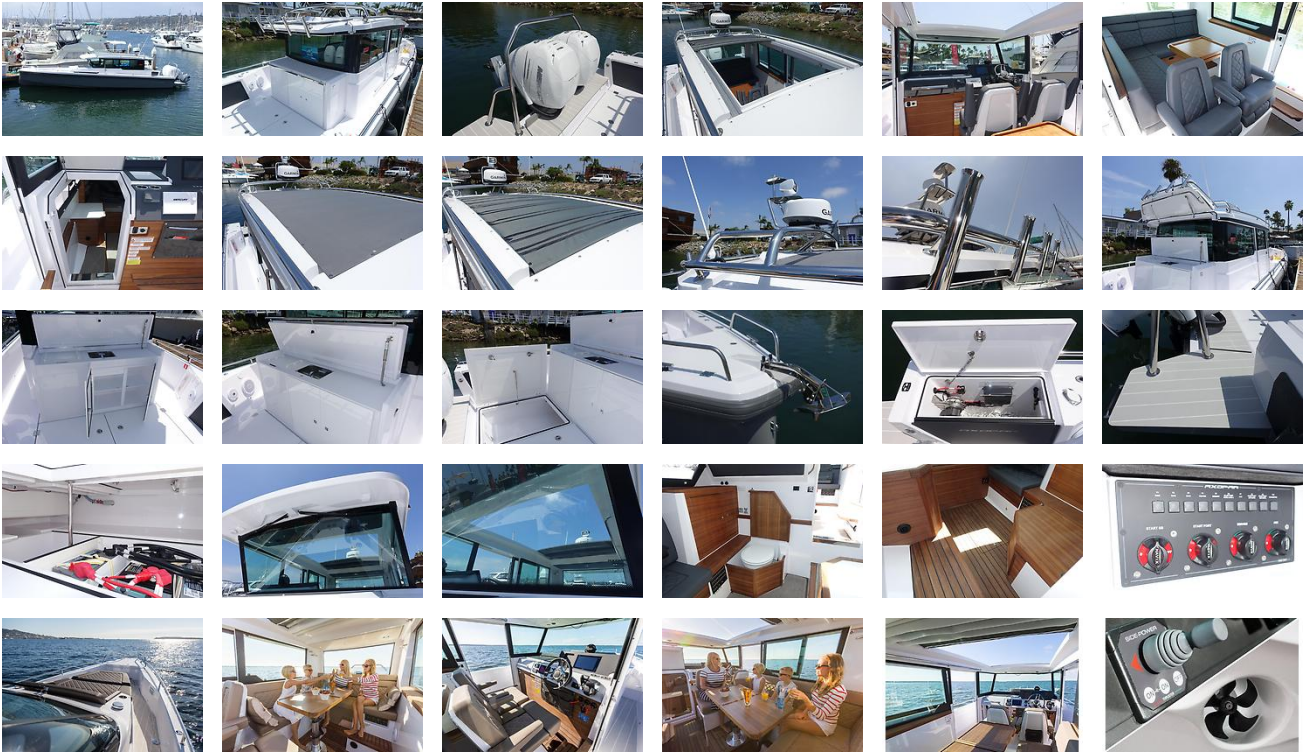
### **Houston Office:**

info@jk3yachts.com

Phone: 713-725-2397



## GALLERY



## LOCATION MAP



### MASTER ADMIN

#### JK3 Yacht Sales

2330 Shelter Island Drive Suite 106

San Diego, CA, US

Office: 619.224.6200

Mobile: (619)-431-1194

info@jk3yachts.com