



MASTER ADMIN

JK3 Yacht Sales

2330 Shelter Island Drive Suite 106

San Diego, CA, US

Office: 619.224.6200

Mobile: (619)-431-1194

info@jk3yachts.com

2019 Hanse 418

Boat Type: Cruiser

Address: Seattle, WA, US

Price: [Upon Request](#)



OVERVIEW

IN STOCK---AVAILABLE NOW IN SEATTLE, WA

The new Hanse 418 exudes a unmistakable, strong personality that makes every day you spend on the water a true highlight. Its clear, fast lines are already the talk of an amazed sailing scene. Thanks to the optimised hydrodynamic flow conditions, the straight stem and extra-long waterline, this Hanse yacht is perfect for a genuine sailing experience: fast, safe and comfortable gliding through the water. With all this, the Hanse 418 is setting a new standard in its class. Come aboard and revel in its beauty!

The Hanse Easy Sailing Concept is legendary. We invented the integrated self-tacking jib and brought all the lines to the helm. This means you can sail your yacht alone or carefree while enjoying time with guests. Reefing, tacking and setting sail can all be performed from the helm without any effort. The deck is free of lines and fittings, giving you uncompromising comfort and space while you are at sea or relaxing in the harbour.

Feel at home on the high seas. The trademark fast hull line and the impressive sail plan come from the pen of

judel/vrolijk & co, the worlds best and most experienced yacht construction engineers. The combination of a perfectly harmonised lateral plan and a pre-balanced rudder blade are a further guarantee for high-speed performance and safety while you are sailing

With Hanse, you have a progressive yacht that makes a statement. Technical innovations and quality in every detail are just as much part of the Hanse 418 as are an emotional design and comfortable atmosphere of well-being. Each detail is a subtle expression of superior design. The well-orchestrated ensemble of advanced technology and its integration is the highest art of yacht design at Hanse and what drives us to create the perfect yacht.

OPTIONS ADDED:

• B&G NAVIGATION PACKAGE

- 2 B&G Triton multifunction displays in cockpit, incl. transducer (wind/depth/speed/temperature)
- B&G VHF V50 at chart table, incl. wireless remote handset H50 (only with XK5000 or XK5011)
- B&G Zeus 9" chart plotter at cockpit table
- B&G Autopilot with Triton control unit and precision 9 compass
- VHF preparation with antenna and splitter for FM and AIS

• CRUISING PACKAGE

- Teak on cockpit bottom
- Helmsman footrests (free mountable)
- 2 additional cleats, midship (1 each side)
- Anchor windlass, electrical, remote control with chain counter (only with XH1001)
- Delta-anchor 16kg, galvanized with 30m galvanized chain, dia. 8mm
- Battery Set, capacity 1x 90 Ah 2x 160 Ah AGM
- Shower unit in cockpit, warm/coldwater
- Wind indicator
- Flagpole
- 6 fenders
- 4 mooring lines
- HANSE maintenance kit

• PERFORMANCE PACKAGE

- 2 GRP comfort shaped steering wheels, Y-spoke – White
- 2 LEWMAR 45 ST EVO manual secondary winches
- ELVSTROM FCL performance sails – full battened, tiradial, main and jib
- Dyneema halyards for main and jib
- Selden MDS mainsail slider system

• COMFORT PACKAGE

- Courtesy lights in cockpit
- Courtest lights in companionway
- 2 vents for coach roof hatches
- Indirect lights in saloon and cabins
- LED overhead lights in saloon and master cabin, dimmable (only with XL9010)
- SLS – Scenario light system – touch screen controller and dimmer in saloon
- Cockpit cushions – Dark Grey
- Blind set with flyscreens for deck hatches
- Venetian blinds for saloon hull windows

• ENTERTAINMENT PACKAGE

- FUSHION MS-RA205 Multimedia radio with Bluetooth – for saloon and cockpit
- 2x 2 speakers in saloon and cockpit
- FUSHION MS-NRX remote control in cockpit
- FUSHION MS-BT100 Bluetooth audio link

• TV PACKAGE - SALOON

- TV Preparation in saloon
- LED TV flat screen in saloon
- DVB-T2 antenna for TV

• HULL

- GRP Hull, colored gelcoat – Grey

• KEEL

- Keel and rubber – not mounted
- **UPHOLSTERY, CARPETS, & CURTAINS**
- Upholstery – Monte Carlo (color selection) – Dark Grey
- **DECK & OUTSIDE EQUIPMENT**
- Teak on bathing platform (only with XC6001)
- Gateway stanchion
- Bathing platform, manual fold-out with swimming ladder (only with XC1350 or XC1351)
- **RIG & SAILS**
- Lazy bag with lazy jacks (color selection – not with XE1001) – Dark Grey
- Sprayhood with stainless steel stake, 3 windows (1 openable – color selection) – Dark Grey
- **PROPULSION**
- Engine (Diesel, approx.. 39 hp) – saildrive, 2-blade folding propeller
- **EQUIPMENT**
- Inverter/charger, 12V 1600 W – 60 A, incl. AC panel (only with XH1001)
- Heating, hot air with blowers in saloon and master cabin (not with XH4511 and XH4514)
- Outlet for heating in aft cabin port (only with XH4011 and XL3001)
- Microwave in galley
- **ACCESSORIES**
- Cockpit table cover – Dark Grey
- Cover for steering wheels – Dark Grey

SPECIFICATIONS

Basic Information

Manufacturer:	Hanse	Vessel Name:	Hanse 418
Model:	418	Boat Type:	Cruiser
Year:	2019	Hull Material:	Fiberglass
Category:	Sail	Hull Type:	
Condition:	New	Hull Color:	
Location:	Seattle, WA, US	Designer:	
Available for sale in U.S. waters:	Yes	Flag of Registry:	

Dimensions & Weight

Length:	41 ft - 12.5 meter	Draft - max:	6 ft 11 in - 2.11 meter
LOA:	-	Bridge Clearance:	-
Beam:	13 ft 8 in - 4.17 meter	Dry Weight:	-

Engine

Make:	Volvo Penta	Engine Type:	Inboard
Model:	D2-40	Drive Type:	Sail Drive
Engine(s):	1	Fuel Type:	Diesel
Hours:	-	Horsepower:	39 (Individual), 39 (combined)
Cruise Speed:	-	Max Speed:	-
Range:	-	Joystick Control:	No

Tank Capacities

Fuel Tank: 42 gallons - 1 tank(s) Holding Tank: -
Fresh Water Tank: 125 gallons - 1 tank(s)

Accommodations

Total Cabins: 2 Crew Cabins: -
Total Berths: 2 Crew Berths: -
Total Sleeps: - Crew Sleeps: -
Total Heads: 1 Crew Heads: -
Captains Cabin: -

DESCRIPTIONS

STANDARD BOAT

HULL

- 6 hull windows (3 each side)
- GRP hull, isophthalic gelcoat, colour: Signal White (RAL 9003), 1st layer vinylester resin with balsa sandwich core.
- Waterline and cove line, isophthalic gelcoat, color: Dark Grey

KEEL

- L-keel, cast iron, draft: 2.10 m
- GRP rudder with sea-water resistant aluminium shaft and selfaligning bearings

LAYOUT & INTERIOR

- A1: Master cabin with double V-berth, hanging locker and shelves
- B1: Saloon with large L-galley, dining area on stb and sofa on port
- separate head with shower stall on port (only with XL3001)
- C1: Aft cabin with double berth and storage on port, utility room on

stb (only with XL2001)

- 2-burner gas stove, 12 V fridge approx. 130 l, waste bin, double

stainless steel sink with mixing tap

- Interior furniture in high quality marine plywood, satin varnish
- Hanse companionway closing system
- Saloon table, folding with stowage
- Worktop in galley - Black Quartz

WOOD (FURNITURE, FLOORBOARD)

- Furniture - Mahogany Style, Satin Varnish
- Cupboard fronts in wood color
- Floorboard - Acacia

UPHOLSTERY, CARPETS & CURTAINS

- Mattresses for all berths
- Upholstery - Monte Carlo, color: Cream

DECK & OUTSIDE EQUIPMENT

- GRP deck with antislip surface, isophthalic gelcoat, colour: Signal White 1st layer vinylester resin with balsa sandwich

- Teak on cockpit benches
- Twin wheel steering system with emergency tiller
- 2 stainless steel steering wheels with leather cover
- Cockpit table, stainless steel with folding teak tops
- Pulpit and pushpit, stainless steel
- Railing, incl. stanchions and stainless steel wire
- Covered halyards and control lines lead to cockpit helm position,

organizers and jammers, 4 mooring cleats, handrail on coach roof,

bow anchor fitting with step

- 2 LEWMAR 45 ST EVO manual halyard winches
- Swimming ladder
- Self tacking jib system, Mainsheet lead back on boat port and starboard sides
- 2 deck hatches - openable, anchor locker hatch, stowage on coach

roof with acrylic glass hatch

- 6 deck coach roof windows with openable portlight in bathroom,
glass next to companionway, glass in saloon and master cabin
portlight in cockpit side for aft-cabin port

RIG & SAILS

- Rig, anodized aluminium, deck stepped, with kicker, standing and running rigging and 2 reefs
- ELVSTROM Dacron sails - full battened, main and jib

NAVIGATION & INSTRUMENTS

- Illuminated compass
- Navigation lights - LED

PROPULSION

- Fuel tank, approx. 160 l
- Engine (Diesel, approx. 39 hp) - saildrive, 2-blade fix propeller

EQUIPMENT

- 12 V and 230 V electric system with main panels and 230 V shore power and sockets.
- AGM battery set, capacity: 1x 90 Ah + 1x 160 Ah AGM
- Battery charger 35 A
- Manual toilet with sea water flush
- Shower unit in cockpit, warm-/coldwater
- LPG gas system, 1 bottle in stowage
- Blackwater system with deck extraction and seacock

for head, electric and manual bilge pump

- Freshwater system with electric pump and hot water

ACCESSORIES

- Mast steps

SHIPPING & TRANSPORT

- CE - Certificate cat. A - 10

OPTIONS ADDED

B&G NAVIGATION PACKAGE

2 B&G Triton multifunction displays in cockpit, incl. transducer (wind/depth/speed/temperature)

B&G VHF V50 at chart table, incl. wireless remote handset H50 (only with XK5000 or XK5011)

B&G Zeus 9" chart plotter at cockpit table

B&G Autopilot with Triton control unit and precision 9 compass

VHF preparation with antenna and splitter for FM and AIS

CRUISING PACKAGE

Teak on cockpit bottom

Helmsman footrests (free mountable)

2 additional cleats, midship (1 each side)

Anchor windlass, electrical, remote control with chain counter (only with XH1001)

Delta-anchor 16kg, galvanized with 30m galvanized chain, dia. 8mm

Battery Set, capacity 1x 90 Ah 2x 160 Ah AGM

Shower unit in cockpit, warm/coldwater

Wind indicator

Flagpole

6 fenders

4 mooring lines

HANSE maintenance kit

PERFORMANCE PACKAGE

2 GRP comfort shaped steering wheels, Y-spoke – White

2 LEWMAR 45 ST EVO manual secondary winches

ELVSTROM FCL performance sails – full battened, tiradial, main and jib

Dyneema halyards for main and jib

Selden MDS mainsail slider system

COMFORT PACKAGE

Courtesy lights in cockpit

Courtesy lights in companionway

2 vents for coach roof hatches

Indirect lights in saloon and cabins

LED overhead lights in saloon and master cabin, dimmable (only with XL9010)

SLS – Scenario light system – touch screen controller and dimmer in saloon

Cockpit cushions – Dark Grey

Blind set with flyscreens for deck hatches

Venetian blinds for saloon hull windows

ENTERTAINMENT PACKAGE

FUSHION MS-RA205 Multimedia radio with Bluetooth – for saloon and cockpit

2x 2 speakers in saloon and cockpit

FUSHION MS-NRX remote control in cockpit

FUSHION MS-BT100 Bluetooth audio link

TV PACKAGE - SALOON

TV Preparation in saloon

LED TV flat screen in saloon

DVB-T2 antenna for TV

HULL

GRP Hull, colored gelcoat – Grey

KEEL

Keel and rubber – not mounted

UPHOLSTERY, CARPETS, & CURTAINS

Upholstery – Monte Carlo (color selection) – Dark Grey

DECK & OUTSIDE EQUIPMENT

Teak on bathing platform (only with XC6001)

Gateway stanchion

Bathing platform, manual fold-out with swimming ladder (only with XC1350 or XC1351)

RIG & SAILS

Lazy bag with lazy jacks (color selection – not with XE1001) – Dark Grey

Sprayhood with stainless steel stake, 3 windows (1 openable – color selection) – Dark Grey

PROPULSION

Engine (Diesel, approx.. 39 hp) – saildrive, 2-blade folding propeller

EQUIPMENT

Inverter/charger, 12V 1600 W – 60 A, incl. AC panel (only with XH1001)

Heating, hot air with blowers in saloon and master cabin (not with XH4511 and XH4514)

Outlet for heating in aft cabin port (only with XH4011 and XL3001)

Microwave in galley

ACCESSORIES

Cockpit table cover – Dark Grey

Cover for steering wheels – Dark Grey

customContactInformation

Contact your local JK3 Yachts office to receive more information on this beautiful yacht:

San Diego (Main) Office:

INFO@JK3YACHTS.COM

Kenyon Martin Kenyon@jk3yachts.com 858-775-5937

Rick Boyce Rick@jk3yachts.com 858-386-9533

Tiffany Billings Tiffany@jk3yachts.com 858-213-6722

Newport Beach Office:

Aaron Kitakis aaron@jk3yachts.com 949-226-4619

Marina Del Rey Office:

Jim Murrell jim@jk3yachts.com 310-717-0775

Alameda Office:

Diego Gomez Diego@jk3yachts.com 619-519-3093

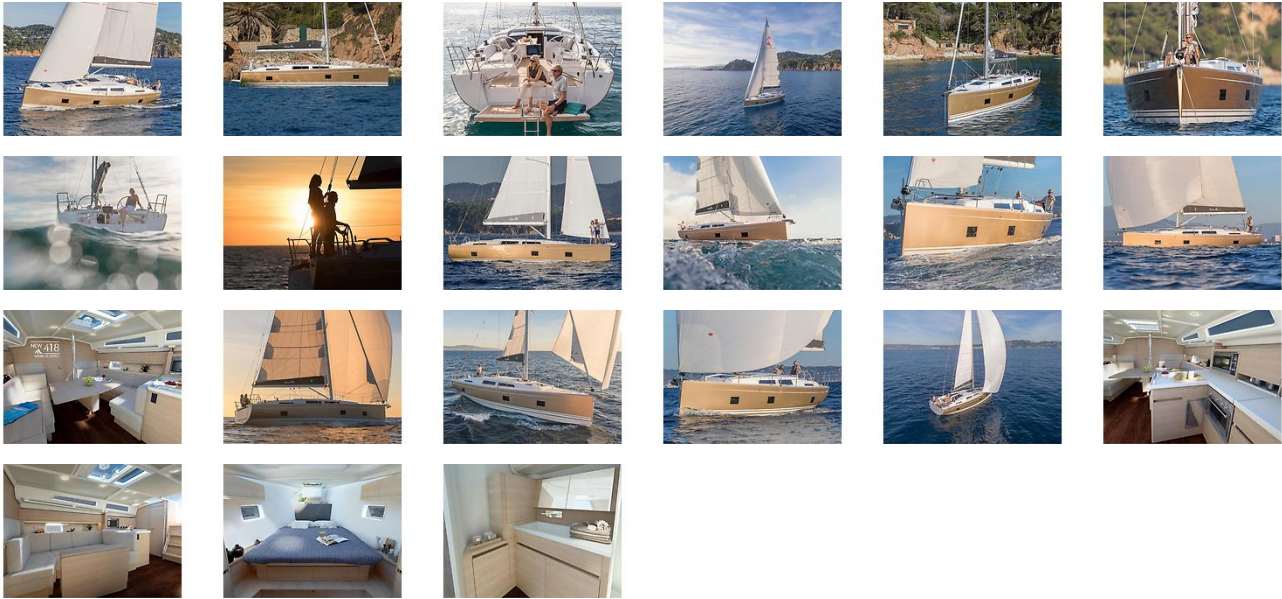
Alan Weaver Alan@jk3yachts.com 510-928-8900

Tom Mowbray tmowbray@jk3yachts.com 415-497-3366

Seattle Office:

Bob Pistay bob@jk3yachts.com 206-285-6200

GALLERY



LOCATION MAP



MASTER ADMIN

JK3 Yacht Sales

2330 Shelter Island Drive Suite 106

San Diego, CA, US

Office: 619.224.6200

Mobile: (619)-431-1194

info@jk3yachts.com