



**KENYON MARTIN**

**JK3 Yacht Sales**

2330 Shelter Island Drive Suite 106

San Diego, CA, US

Office: 619.224.6200

Mobile: 858.775.5937

kenyon@jk3yachts.com



# 2002 Palm Beach 38 Avalon

Boat Type: Downeast

Address: SAN DIEGO, CA, US

Price: \$264,000



## OVERVIEW

Wow - Take a look at this gorgeous Downeast style motor yacht a true classic that will turn heads in any harbor.

***For your personal tour of this magnificent yacht contact the listing agent to schedule time and date.***

## SPECIFICATIONS

### Basic Information

Manufacturer:	Palm Beach	Vessel Name:	Far Niente
Model:	38 Avalon	Boat Type:	Downeast
Year:	2002	Hull Material:	Fiberglass
Category:	Power	Hull Type:	
Condition:	Used	Hull Color:	
Location:	SAN DIEGO, CA, US	Designer:	
Available for sale in U.S. waters:	Yes	Flag of Registry:	

### Dimensions & Weight

Length:	38 ft - 11.58 meter	Draft - max:	-
LOA:	-	Bridge Clearance:	-
Beam:	-	Dry Weight:	-

### Engine

Make:	Yanmar	Engine Type:	Inboard
Model:	6LY2M-STE	Drive Type:	Direct Drive
Engine(s):	1	Fuel Type:	Diesel
Hours:	980	Horsepower:	420 (Individual), 420 (combined)
Cruise Speed:	-	Max Speed:	-
Range:	-	Joystick Control:	No

### Tank Capacities

Fuel Tank:	-	Holding Tank:	-
Fresh Water Tank:	-		

### Accommodations

Total Cabins:	-	Crew Cabins:	-
Total Berths:	-	Crew Berths:	-
Total Sleeps:	-	Crew Sleeps:	-
Total Heads:	-	Crew Heads:	-
Captains Cabin:	-		

## DESCRIPTIONS

### DESCRIPTION

Far Niente is a gorgeous example of the Palm Beach Avalon 38 - She is finished with a stunning deep blue awlgrip

hull and a varnished teak transom for a traditional yacht finish.

She is the perfect boat for a couple and offer generous amounts of room for entertaining.

The Palm Beach Avalon 38 features a generous cockpit with a full beam aft bench seat covered in real leather with room for a removable table and deck chairs.

Moving forward as you enter the main saloon and just to port you will see a built in cabinet with a large top surface - great for setting up appetizers and beverage service. just forward of the cabinet you will find a large "L" shaped Real Leather covered settee situated to port with drop leaf saloon table, and just to starboard in the main saloon there is a storage cabinet outboard and aft of the leather wrapped helm chair. One step down and to port you will enter the galley featuring a 2 burner electric cooktop, SS microwave oven, SS refrigerator and SS sink with storage below and pantry locker just forward to port. To starboard is the head location - this is a wet head setup with fiberglass textured floor, ss sink with pull out faucet and electric flush head. The large v berth is located beyond the galley pantry locker and head and is finished with a premium mattress.

### **Hull Painted at Driscolls Boat Yard 2015**

### **Leather cushions done in 2014**

### **DIMENSIONS**

LOA = 38 feet

BEAM = 10 Feet 6 inches

DRAFT = 3 feet

DRY WEIGHT = 11,000 lbs

FUEL DIESEL = 160 US GAL

FRESH WATER = 106 US GAL

HOLDING TANK = 22 US GAL

### **HEADROOM:**

6'3" Cockpit sole to cabin top overhang

6'4" Main saloon at centerline 6'2" at sides

7'8" Galley sole to cabin top at centerline

5'8" Companionway below middle forward window leading to V berth

5'11" Aft edge of forward berth by hanging locker and outside of head

5'10" Inside head

### **BERTH LENGTH:**

6'4" V Berth Length at center line

New Bottom Paint - JULY 2016 at Driscolls Boat Yard San Diego

### **ENGINE**

The Palm Beach Avalon 38 features a single diesel engine with traditional shaft drive and bow thruster.

YANMAR MODEL 6LY2M - STE 420 HP DIESEL  
Shaft Diameter = 2" Length = 7' 11 1/2" Single Taper

ENGINE HOURS: 980

zinks/filters oil change - June 2016

zinks/filters oil change and full engine check - June 28 2017

RPM / SPEEDS (recorded while underway)

750 = 5 knots  
1000 = 6 knots  
1250 = 7.5 knots  
1500 = 8.5 knots  
1750 = 9.6 knots  
2000 = 11.3 knots  
2250 = 13.5 knots  
2500 = 15.9 knots  
2750 = 18.1 knots  
3000 = 19.8 knots  
3250 = 21.8 knots  
3500 = 23.2 knots

HELM INSTRUMENTATION:

- Morse electronic engine control KE-4 throttle
- RPM
- Volts
- Fuel Level
- Water Temp
- Oil Pressure

## **ELECTRONICS & NAV**

FURUNO - GPS/CHARTPLOTTER

FURUNO - RADAR

FURUNO - DEPTH

ROBERTSON - AUTOPILOT

ICOM - VHF

FUSION - STEREO / IPOD / SAT RADIO w Speaker in Main Saloon  
and Cockpit

FUSION REMOTE BY AFT COCKPIT SEAT

SIDE POWER - BOW THRUSTER

## **ELECTRICAL SYSTEMS AND EQUIP**

Shore power cable connection and 30amp cable.  
Outlets, 110 VAC, with GFCI circuit.

Navigation/Running lights.

Engine room lights.

Electric horn.

Cockpit courtesy lights.

Bonding system with zinc anodes.

Battery charger, automatic.

Battery level indicator at main electrical panel.

Battery isolation switches 3.

Battery emergency paralleling switch.

Battery boxes.

Battery bank, house bank 2 LIFELINE AGM.

Battery bank, engine starting LIFELINE AGM.

12V DC electrical system,

12V - AC power inverter for 115 VAC.

## **DECK HARDWARE AND DETAILS**

Teak transom (Pictured).

Teak flagstaff at transom.

Teak cockpit deck.

Transom step thru door.

Swim platform off stern.

Swim ladder, stainless steel.

Transom shower.

Rub rail, polished stainless steel.

Grab rail on cabin top.

Dock lines, fenders and fender covers.

Cockpit transom seating.

Exterior REAL leather cushions treated for marine environment.

Cockpit storage lockers in gunwale and under cockpit deck.

Cleats, custom stainless steel.

### **CANVAS:**

Canvas for cabin windows, cockpit, overhead hatches.

Full Canvas Boat Cover (Pictured).

Cockpit Shade Sunbrella Material (Pictured).

### **ANCHORING GEAR:**

Anchor windlass, dual function for chain and rode, remote to helm.

Anchor roller, self deploying, polished stainless steel.

Anchor chain 50 feet.

Anchor rode 100 feet.

Anchor chain locker with fender storage with large access hatch.

Anchor: Manson 25 Lbs, galvanized.

Anchor - Additional "Danforth" stored in cockpit locker

Removable dinghy davits (stainless steel) stored under aft seat.

## **MECHANICAL / PLUMBING SYSTEMS**

Bow thruster.

Bennett trim tabs.

Jabsco fresh water electric flush toilet.

Water heater.

SS deck plate inlets for fuel, water and holding tank.

Shower sump pump.

Raw water strainers.

Racor fuel filter/water separator.

Fresh water system with high-pressure pump.

Bilge pumps with monitor, automatic / manual modes and high-water alarm.

Engine and machinery compartment with sound suppression.

## **HELM STATION**

Windlass control.

Spotlight control.

Helm dash, solid teak.

Single helm seat.

Custom teak steering wheel with stainless steel spokes.

Furuno electronics.

Accessory switches for navigation and accessories.

12v outlet.

Mag Compass.

Bow thruster joy stick.

## **MAIN SALOON**

Fully carpeted main saloon with sound insulation material under carpet.

Teak storage lockers along starboard side.

Bottle and glass storage.

Teak drop leaf dining table (removable).

REAL Leather (protected for marine environment) dinette/settee seating to port with pull out to make up into a double berth (Pictured).

Port lights, frameless, tinted.

Overhead deck hatches with tinted windows, shade covers and insect screens.

Interior walls finished with marine varnish, satin finish.

Interior lighting with overhead, reading and recessed fixtures.

Headliners - fiberglass "beadboard look" with sound insulation foam.

Teak head floors with satin finish.

Teak galley floor with satin finish.

Teak doors, frames, storage lockers, shelves and drawers.

Teak companionway steps and grab rails.

## **GALLEY**

Microwave oven, stainless steel finish.

Refrigerator (cold plate style) under counter ss door.

Cook top, electric 2 burner.

Faucet, single lever, chrome pull out style.  
Sink, stainless steel.

Dedicated storage drawers for cutlery, dish and glassware.  
Trash container, drop-in with plastic bin.

Solid surface countertops in teak.  
Teak floors.

## **HEAD**

The Head on the Avalon 38 is located down from main saloon and past the galley to starboard and features:

White electric flush fresh water JABSCO head.  
SS sink with pull out faucet, wet head setup.  
Molded fiberglass floor.  
Storage cabinet below sink.  
Shower sump pump.  
Towel rack.  
Toilet paper holder.  
Mirror.

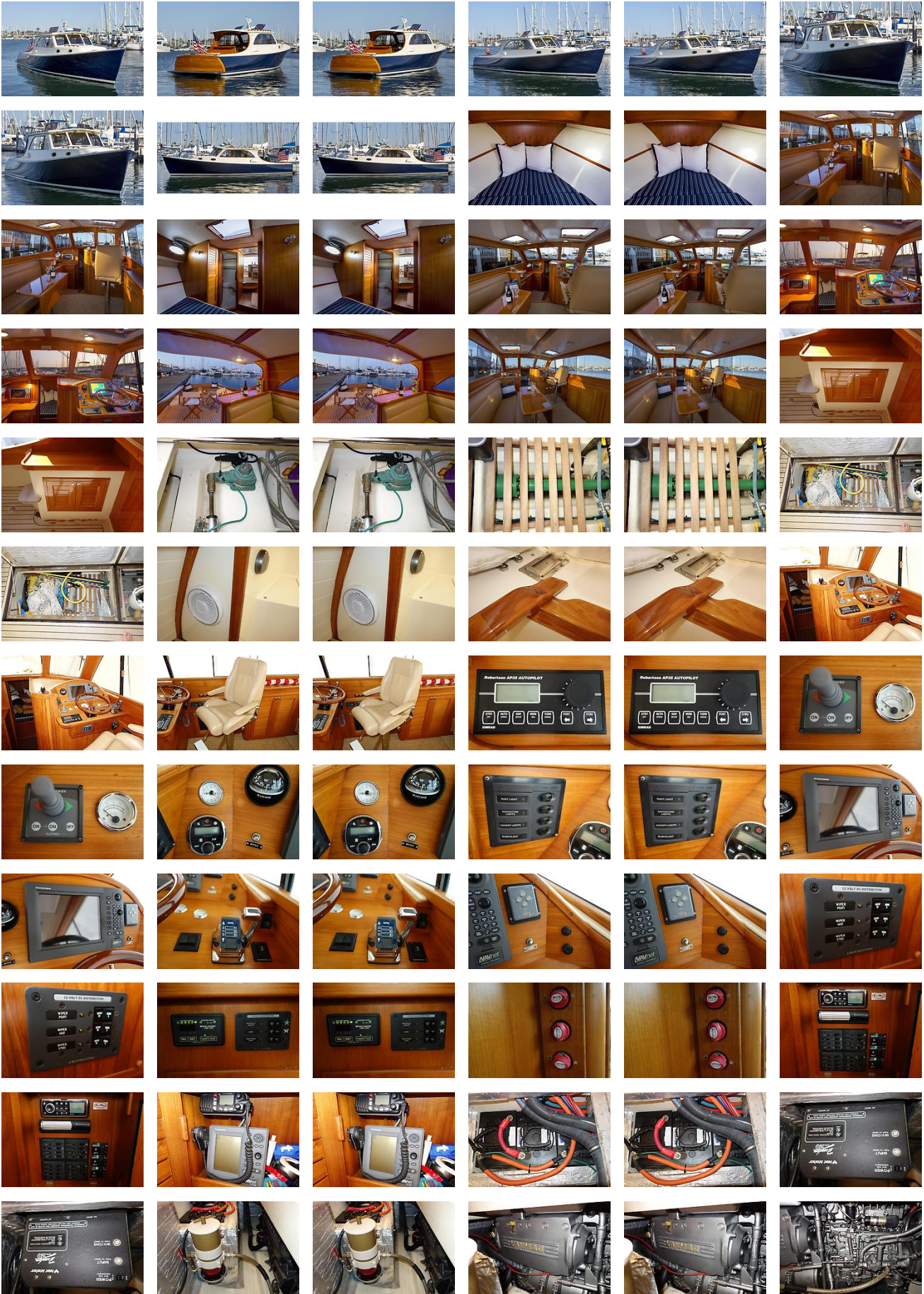
## **FORWARD BERTH**

V Berth with premium mattress.  
Port windows port and starboard.  
Single hatch overhead.  
Teak storage locker with louvered door port and starboard.  
Teak clad bulkheads.  
Cream covered fabric hull sides.

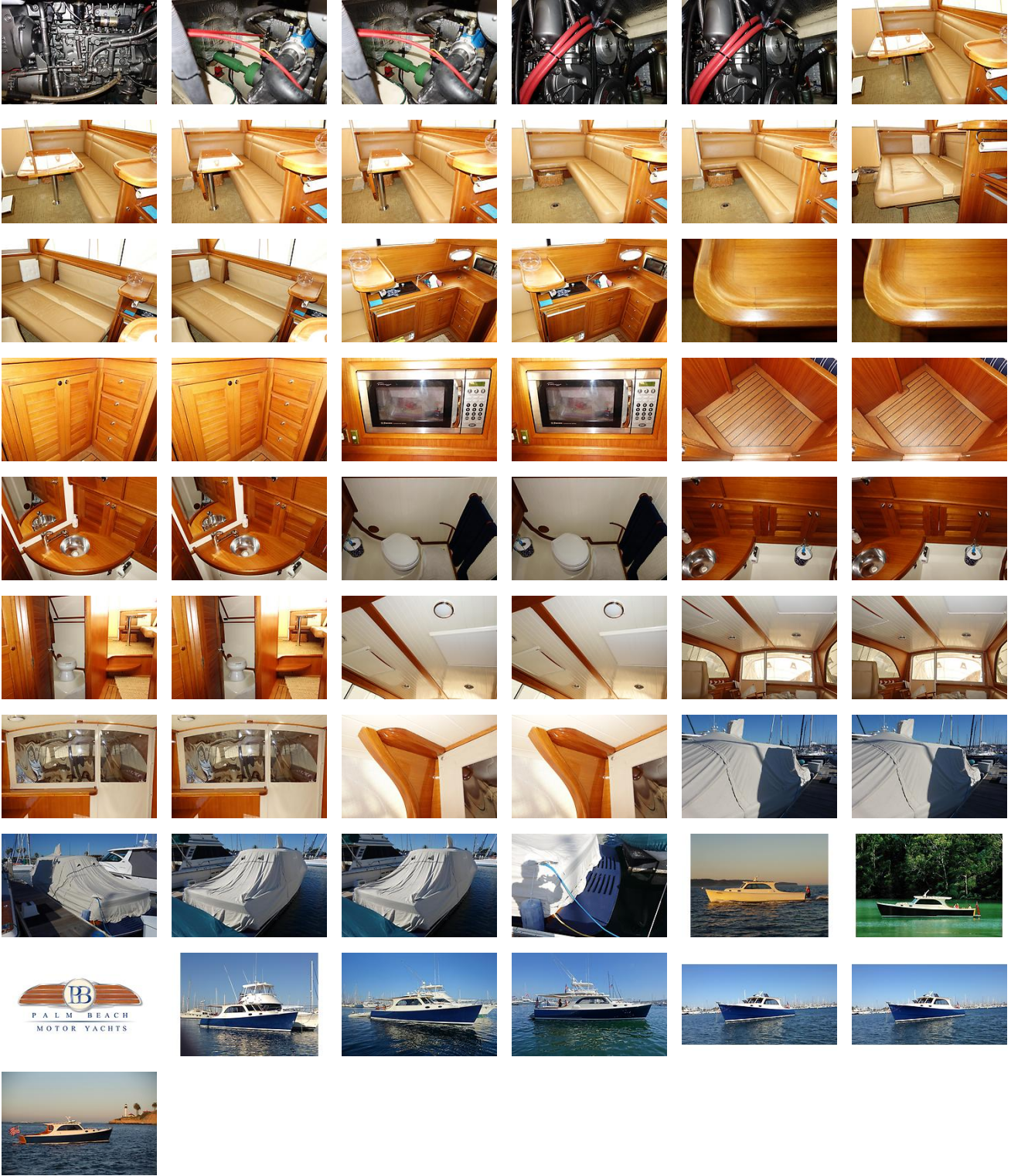
## **Disclaimer**

The Company offers the details of this vessel in good faith but cannot guarantee or warrant the accuracy of this information nor warrant the condition of the vessel. A buyer should instruct his agents, or his surveyors, to investigate such details as the buyer desires validated. This vessel is offered subject to prior sale, price change, or withdrawal without notice.

# GALLERY







LOCATION MAP



**KENYON MARTIN**

**JK3 Yacht Sales**  
2330 Shelter Island Drive Suite 106  
San Diego, CA, US  
Office: 619.224.6200  
Mobile: 858.775.5937  
[kenyon@jk3yachts.com](mailto:kenyon@jk3yachts.com)

