



**MASTER ADMIN**

**JK3 Yacht Sales**

2330 Shelter Island Drive Suite 106

San Diego, CA, US

Office: 619.224.6200

Mobile: (619)-431-1194

info@jk3yachts.com

# 2017 Bavaria Virtess 420 Fly

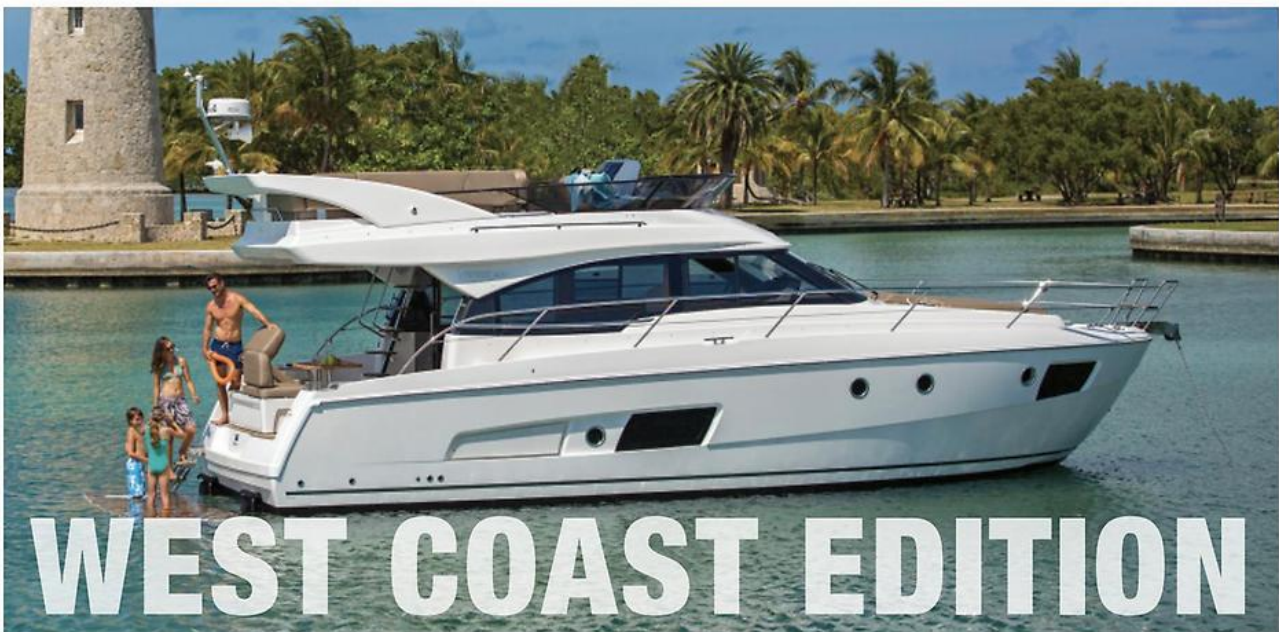
Boat Type: Motor Yacht

Address: San Diego, CA, US

Price: \$615,000



*VIRTESS 420 FLY*



## OVERVIEW

**LAST OF OUR 2017/18 model year**

**A GREAT OPPORTUNITY TO GET A NEW BOAT AT SUBSTANTIAL SAVINGS**

**NEVER BEEN REGISTERED BEING SOLD AS A DEMO.**

**SPECIAL PRICING \$615,000 !!!**

Welcome aboard the Bavaria Virtess 420 Fly where you will have the wind in your hair on the flybridge, as if you were at the wheel of a convertible, the ambiance of a fine dining restaurant on the aft deck, the luster of a suite at a 5-star hotel in the saloon and in the three cabins, and driving dynamics of a luxury class sports car.

A breath-taking sense of space below deck and stylish design above deck is what make the Virtess line such a unique motor yacht in the premium segment.

## SPECIFICATIONS

### Basic Information

Manufacturer:	Bavaria	Vessel Name:	Virtess 420 Fly
Model:	Virtess 420 Fly	Boat Type:	Motor Yacht
Year:	2017	Hull Material:	Other
Category:	Power	Hull Type:	
Condition:	New	Hull Color:	
Location:	San Diego, CA, US	Designer:	
Available for sale in U.S. waters:	Yes	Flag of Registry:	

### Dimensions & Weight

Length:	42 ft - 12.8 meter	Draft - max:	3 ft 8 in - 1.12 meter
LOA:	-	Bridge Clearance:	-
Beam:	13 ft 10 in - 4.22 meter	Dry Weight:	25133 ft - 7660.54 meter

### Engine

Make:		Engine Type:	Inboard
Model:	D6-435 EVC	Drive Type:	
Engine(s):	2	Fuel Type:	Diesel
Hours:	-	Horsepower:	435 (Individual), 870 (combined)
Cruise Speed:	-	Max Speed:	-
Range:	-	Joystick Control:	No

### Tank Capacities

Fuel Tank:	317 gallons - 1 tank(s)	Holding Tank:	-
Fresh Water Tank:	108 gallons - 1 tank(s)		

### Accommodations

Total Cabins:	3	Crew Cabins:	-
Total Berths:	-	Crew Berths:	-
Total Sleeps:	-	Crew Sleeps:	-
Total Heads:	2	Crew Heads:	-
Captains Cabin:	-		

## DESCRIPTIONS

### Steering System

Joystick Control

- Hull color: white
- Colored stripe on hull, dark grey

- 8 hull windows to open up (with blinds)
- Underwater light package

## **DECK**

- 4 hatches to open up
- 2 salon windows to open up
- Sun upholstery for foredeck
- Fender baskets on railings
- Bathing platform hydraulically lowerable with teak and automatically access stair including operating battery, AGM
- Side deck with anti slip structure
- Anchor locker, self-drained
- Handrail sideways on flybridge, stainless steel
- 6 stainless steel cleats
- Windscreen wiper stb and port with synchronous control
- Stainless steel bow rail

## **FLYBRIDGE**

- Radar arch GRP
- Fly deck with anti slip structure
- Helmstand with double seat
- Table on fly deck
- Sunpad on fly deck
- Handrail on flybridge stairs, stainless steel
- Wetbar with sink and grill
- Storage Room for liferaft
- Lighting package

## **COCKPIT**

- Twin aft seating with multiple positioning track for various seating configurations
- Teak on cockpit floor
- Cockpit upholstery: "Suntex" Dove
- Cockpit, self-drained
- Cockpit lights
- Cockpit seat and upholstery
- Stern-shower for warm and cold water

## **ACCOMMODATIONS**

### **CABINS: 3**

- Side windows in hull with Oceanaire blinds
- Blinds and fly screen on hatches
- Two single berths, convertible into a double berth in aft cabins
- Double berth in forward owner cabin with on suite head
- Fabric on side panels
- Upgraded premium mattresses - fabric color: Cream

### **SALOON:**

- Windscreen tinted (laminated glass)
- Side windows tinted (security glass)
- Illuminated compass
- Helmstand with double seat
- Glass Multi-panel sliding door from cockpit to main saloon
- Upper LED lighting
- Interior wood in solids and veneer
- Cabin sole - classic strips
- Ceiling covered in fabric

- Settee in salon to starboard
- Salon table in solid wood
- Wood color: SIPO
- Upholstery interior: Leatherette white
- Side panels with fabric - color = white

## **HEADS**

### **HEADS: 2**

- Onsuite head in forward master cabin with electric flush fresh water toilet, separate shower stall
- Day head to port with electric flush fresh water toilet, separate shower stall

## **GALLEY**

- Linear Galley located to Port
- Ceramic electric 2 burner stove top
- Microwave oven
- Double stainless steel sink, with cover
- Corian counter top
- Overhead storage cabinets
- Refrigerator 80L. 12v
- Refrigerator Drawer
- Ice Maker
- Lower storage drawers
- Cabinet with trash and recycle bins

## **ENGINES / PROPULSION**

- **Twin Volvo Diesel D6-435 hp each with IPS Pod Drives and Joystick controller**
- **Bow Thruster**
- **Bennett Trim Tabs**
- Engine bay fan
- Engine bay ladder
- Engine compartment illumination
- Manual bilge pump in engine bay
- Electrical bilge pump in engine bay

## **ELECTRICAL**

- Shore power supply, 230 V
- Battery charger, 40 A (3-channel)
- Starter battery, AGM (1 x per engine)
- House batteries, AGM
- Main switch for house batteries and starter batteries
- AC-outlet package (2 per cabin and 3 in galley)
- Generator 12kw Fisher Panda

## **NAVIGATION**

- GARMIN 7212 GPS/Chartplotter touch screen
- GARMIN VHF w AIS
- GARMIN Autopilot
- Navigation lights (BDI certification)
- Sumlog-sonar, Bidata
- Accoustic signal system (BSH certification)

## **OPTIONS ADDED**

Upgraded West Coast Package

Navigation II

Search light 100W with remote control on both helmstands

Bathing platform hydraulically lower-able with teak and automatically access stai.

Mooring kit (8 fenders and 4 mooring lines)

Cockpit upholstery "Suntex" including upholstery on fly deck

Electric grill on fly deck

Fold-able table including cup holder

Bimini - colored

Table in salon, electrical lower-able and fold-able

Floor ocean line

Venetian blinds for dimming the salon side windows

Upholstery artificial leather "Leatherette"

Mattress fabric "Living"

Ice maker in salon including refrigerator drawer

TV cabling in salon digital and analog including antenna with outlet

FUSION Marina audio in owners cabin

BOSE Acoustimass 3 System in salon

Active corrosion protection ACP

Diesel generator 12 kw

Shore power supply 110 V with 1 x 110 V AC-outlet on switch board

## **Disclaimer**

JK3 Yachts offers the details of this vessel in good faith but cannot guarantee or warrant the accuracy of this information nor warrant the condition of the vessel. A buyer should instruct his agents, or his surveyors, to investigate such details as the buyer desires validated. This vessel is offered subject to prior sale, price change, or withdrawal without notice.

## **customContactInformation**

**Contact your local JK3 Yachts office to receive more information on this beautiful yacht:**

### **San Diego (Main) Office:**

INFO@JK3YACHTS.COM

Kenyon Martin Kenyon@jk3yachts.com 858-775-5937

Rick Boyce Rick@jk3yachts.com 858-386-9533

Tiffany Billings Tiffany@jk3yachts.com 858-213-6722

### **Newport Beach Office:**

Aaron Kitakis aaron@jk3yachts.com 949-226-4619

### **Marina Del Rey Office:**

Jim Murrell jim@jk3yachts.com 310-717-0775

**Alameda Office:**

Diego Gomez Diego@jk3yachts.com 619-519-3093

Alan Weaver Alan@jk3yachts.com 510-928-8900

Tom Mowbray tmowbray@jk3yachts.com 415-497-3366

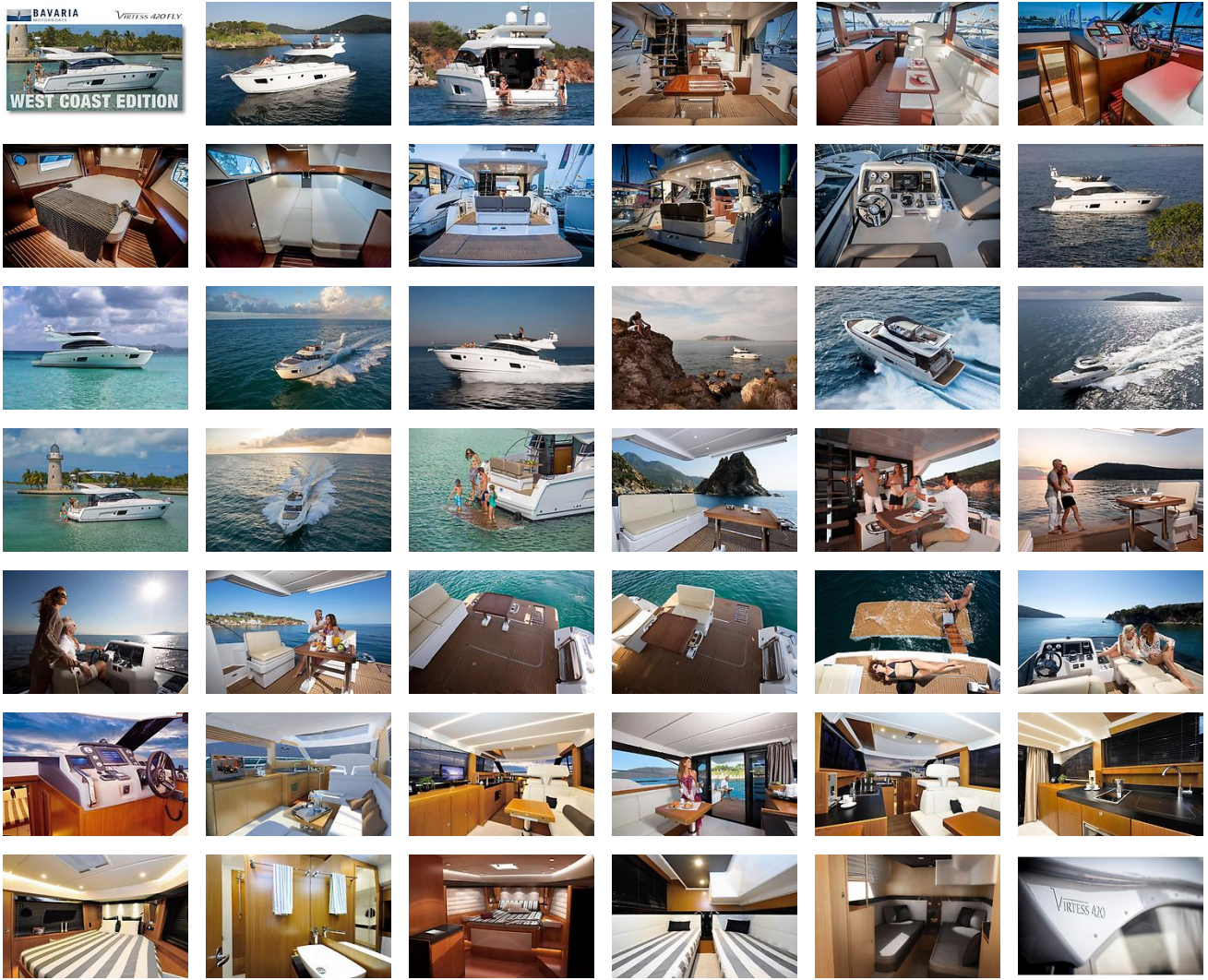
**Seattle Office:**

Bob Pistay bob@jk3yachts.com 206-285-6200

**External Links**

- [Manufacturer Website](#)Manufacturer Website

# GALLERY



# LOCATION MAP





**MASTER ADMIN**

**JK3 Yacht Sales**

2330 Shelter Island Drive Suite 106

San Diego, CA, US

Office: 619.224.6200

Mobile: (619)-431-1194

info@jk3yachts.com