



## MASTER ADMIN

### JK3 Yacht Sales

2330 Shelter Island Drive Suite 106

San Diego, CA, US

Office: 619.224.6200

Mobile: (619)-431-1194

info@jk3yachts.com

# 2017 Bavaria Virtess 420 Fly

Boat Type: Motor Yacht

Address: San Diego, CA, US

Price: [Upon Request](#)



## OVERVIEW

### SEE THIS BOAT AT THE SAN DIEGO SUNROAD BOAT SHOW JANUARY 26-29, 2017

Welcome aboard the Bavaria Virtess 420 Fly where you will have the wind in your hair on the flybridge, as if you were at the wheel of a convertible, the ambiance of a fine dining restaurant on the aft deck, the luster of a suite at a 5-star hotel in the saloon and in the three cabins, and driving dynamics of a luxury class sports car.

A breath-taking sense of space below deck and stylish design above deck is what make the Virtess line such a unique motor yacht in the premium segment.

## SPECIFICATIONS

### Basic Information

Manufacturer:	Bavaria	Vessel Name:	Virtess 420 Fly
Model:	Virtess 420 Fly	Boat Type:	Motor Yacht
Year:	2017	Hull Material:	Other
Category:	Power	Hull Type:	
Condition:	New	Hull Color:	
Location:	San Diego, CA, US	Designer:	
Available for sale in U.S. waters:	Yes	Flag of Registry:	

### Dimensions & Weight

Length:	41 ft - 12.5 meter	Draft - max:	3 ft 8 in - 1.11 meter
LOA:	40 ft 8 in - 12.39 meter	Bridge Clearance:	-
Beam:	13 ft 10 in - 4.21 meter	Dry Weight:	25133 ft - 7660.54 meter

### Engine

Make:		Engine Type:	Inboard
Model:	D6-370 EVC	Drive Type:	
Engine(s):	2	Fuel Type:	Diesel
Hours:	-	Horsepower:	370 (Individual), 740 (combined)
Cruise Speed:	-	Max Speed:	-
Range:	-	Joystick Control:	No

### Tank Capacities

Fuel Tank:	317 gallons - 1 tank(s)	Holding Tank:	-
Fresh Water Tank:	108 gallons - 1 tank(s)		

### Accommodations

Total Cabins:	3	Crew Cabins:	-
Total Berths:	-	Crew Berths:	-
Total Sleeps:	-	Crew Sleeps:	-
Total Heads:	2	Crew Heads:	-
Captains Cabin:	-		

## DESCRIPTIONS

### Hull

- Hull color: white
- Colored stripe on hull, dark grey
- 8 hull windows to open up (with blinds)

- Underwater light package

## **Deck**

- 4 hatches to open up
- 2 salon windows to open up
- Sun upholstery for foredeck
- Fender baskets on railings
- Bathing platform hydraulically lowerable with teak and automatically access stair including operating battery, AGM
- Side deck with anti slip structure
- Anchor locker, self-drained
- Handrail sideways on flybridge, stainless steel
- 6 stainless steel cleats
- Windscreen wiper stb and port with synchronous control
- Stainless steel bow rail

## **Fly Deck**

- Radar arch GRP
- Fly deck with anti slip structure
- Helmstand with double seat
- Table on fly deck
- Sunpad on fly deck
- Handrail on flybridge stairs, stainless steel
- Wetbar with sink
- Storage Room for liferaft
- Lighting package
- Mooring Cover : Grey

## **Cockpit**

- Teak on cockpit floor
- Cockpit upholstery: "Suntex" Dove
- Cockpit, self-drained
- Cockpit lights
- Cockpit seat and upholstery
- Stern-shower for warm and cold water

## **Accommodations**

### **Cabins**

- Side windows in hull with blinds
- Blinds and fly screen on hatches
- Two single berths, convertible into a double berth in aft cabins
- Double berth in forward cabin
- Selectable fabric color on side panels
- Upgraded premium mattresses - fabric color: Cream

### **Salon**

- Windscreen tinted (laminated glass)
- Side windows tinted (security glass)

- Illuminated compass
- Helmstand with double seat
- Glass sliding door to cockpit
- Roof lamps
- Interior wood in solid and veneer, standard in sipo
- Floor : Teak and holly
- Covered panel ceiling
- Settee in salon
- Salon table in solid wood
- Wood color : Sipo
- Upholstery interior : Leatherette white
- Side panels with fabric color: white

#### Stowage space

- Locker and racks
- Stowage space
- Stowage space under sitting area
- Stowage space under cockpit bench
- Overhead locker and wardrobe

#### Galley

- Ceramic stove top
- Microwave
- Refrigerator, 12 V, 80 l
- Double stainless steel sink, with cover

#### Engines

- Engine bay fan
- Engine bay ladder
- Engine compartment illumination
- Manual bilge pump in engine bay
- Bow thruster
- Bennet trim tabs
- Electrical bilge pump in engine bay
- Electrical bilge pump in aft cabin

#### Electrical

- AC-outlet package (2 per cabin and 3 in galley)
- Shore supply, 230 V
- Battery charger, 40 A (3-channel)
- Starter battery, AGM (1 x per engine)
- House battery, AGM
- Main switch for house batteries and starter batteries

#### Navigation

- Navigation lights (BDI certification)
- Sumlog-sonar, Bidata
- Acoustic signal system (BSH certification)

## **Engine Notes**

Engine: 2 x **IPS** 600 (2 X 435 PS/mhp, 2 x 320kW) including joystick

2 x Joystick for Volvo Penta IPS engines

## **Options Added**

Upgraded West Coast Package

Navigation II

Search light 100W with remote control on both helmstands

Bathing platform hydraulically lower-able with teak and automatically access stai.

Mooring kit (8 fenders and 4 mooring lines)

Cockpit upholstery "Suntex" including upholstery on fly deck

Electric grill on fly deck

Fold-able table including cup holder

Bimini - colored

Table in salon, electrical lower-able and fold-able

Floor ocean line

Venetian blinds for dimming the salon side windows

Upholstery artificial leather "Leatherette"

Mattress fabric "Living"

Ice maker in salon including refrigerator drawer

TV cabling in salon digital and analog including antenna with outlet

FUSION Marina audio in owners cabin

BOSE Acoustimass 3 System in salon

Active corrosion protection ACP

Diesel generator 12 kw

Shore power supply 110 V with 1 x 110 V AC-outlet on switch board

Autopilot GHP 10 V for Volvo Penta with Aquamatic Joystick (IPS and Z-Drive) with control units on both helmstands

Steel cradle for oversea transport

Ship Shrink Wrap

## **Disclaimer**

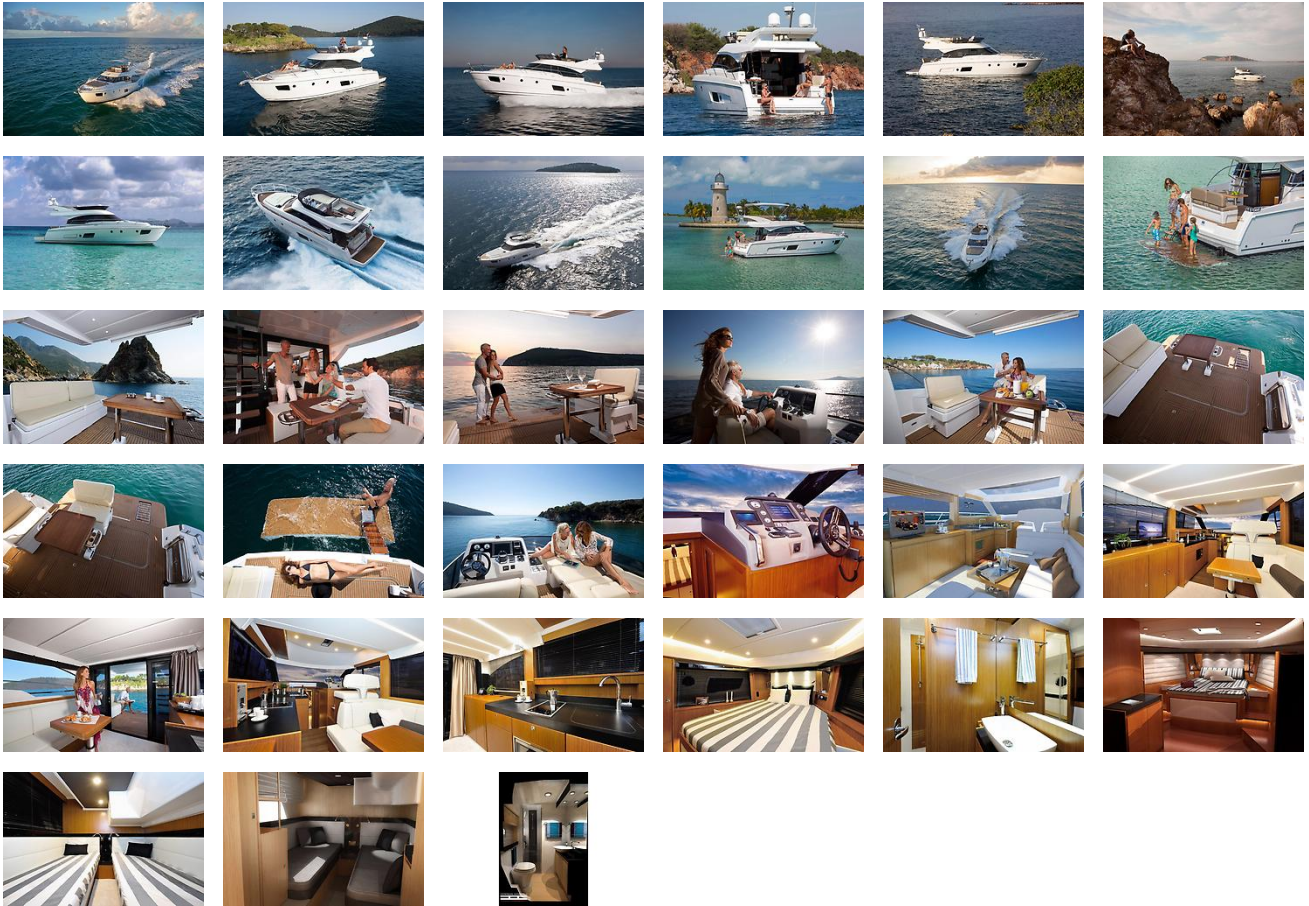
The Company offers the details of this vessel in good faith but cannot guarantee or warrant the accuracy of this information nor warrant the condition of the vessel. A buyer should instruct his agents, or his surveyors, to

investigate such details as the buyer desires validated. This vessel is offered subject to prior sale, price change, or withdrawal without notice.

## External Links

- [Manufacturer Website](#)Manufacturer Website

## GALLERY



## LOCATION MAP



**MASTER ADMIN**  
**JK3 Yacht Sales**  
2330 Shelter Island Drive Suite 106  
San Diego, CA, US  
Office: 619.224.6200  
Mobile: (619)-431-1194  
info@jk3yachts.com